



LEDtube Mains T5

MAS LEDtube 600mm HE 8W 865 T5

The new Philips Master LEDtube Mains T5 brings simplicity to your lighting project. You no longer need to pay attention to the driver technology. Thanks to a unique design, the Philips MASTER LEDtube Mains T5 directly installs in luminaires operating on mains power. Simple to operate and no need to carry double stock of products! Perfectly safe, reliable and easy to install: Philips MASTER LEDtube Mains T5 is the ideal alternative to standard fluorescent tubes to maximise value over lifetime with high-energy saving and lower maintenance costs.

Product data

General Information	
Cap base	G5 [G5]
EU RoHS compliant	Yes
Nominal lifetime (nom.)	50000 h
Switching cycle	200,000X
Technical type	8-14W
Light Technical	
Colour Code	865 [CCT of 6,500 K]
Technical Beam Angle (Nom)	200 °
Lamp Luminous Flux 25°C EL (Nom)	1050 lm
Colour Designation	Cool Daylight
Colour Temperature, horizontal (Nom)	6500 K
Lamp Luminous Efficacy EM (Nom)	131.00 lm/W
Colour consistency	<6
Colour Rendering Index, horiz (Nom)	80
LLMF at end of nominal lifetime (nom.)	70 %
Operating and Electrical	
Input frequency	50 to 60 Hz

Power (Rated) (Nom)	8 W
Lamp current (max.)	90 mA
Lamp current (min.)	35 mA
Starting time (nom.)	0.5 s
Warm-up time to 60% light (nom.)	0.5 s
Power factor (nom.)	0.9
Voltage (Nom)	100-240 V
Temperature	
T-ambient (max.)	45 °C
T-ambient (min.)	-20 °C
T storage (max.)	65 °C
T storage (min.)	-40 °C
T-Case maximum (nom.)	60 °C
Controls and Dimming	
Dimmable	No
Mechanical and Housing	
Lamp Finish	Frosted

LEDtube Mains T5

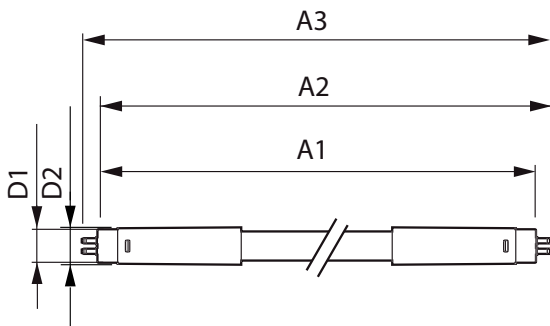
Bulb material	Glass
Product length	600 mm
Approval and Application	
Energy efficiency label (EEL)	A++
Energy-saving product	Yes
Approval marks	RoHS compliance CE marking KEMA Keur certificate
Energy consumption kWh/1,000 hours	8 kWh

Product Data

Full product code	871869978347100
-------------------	-----------------

Order product name	MAS LEDtube 600mm HE 8W 865 T5
EAN/UPC – product	8718699783471
Order code	929002420808
Numerator – quantity per pack	1
SAP numerator – packs per outer box	10
Material no. (12 NC)	929002420808
Net Weight (Piece)	0.250 kg

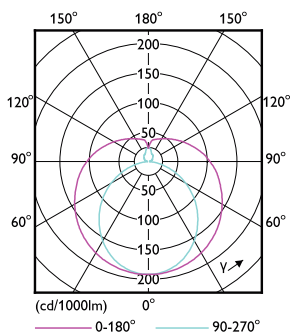
Dimensional drawing



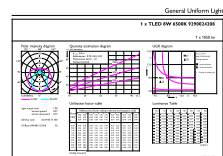
Master LEDtube 600mm 8W865 G5 WV GMGC

Product	D1	D2	A1	A2	A3
MAS LEDtube 600mm HE 8W 865 T5	15.8 mm	19 mm	549 mm	556.1 mm	563.2 mm

Photometric data



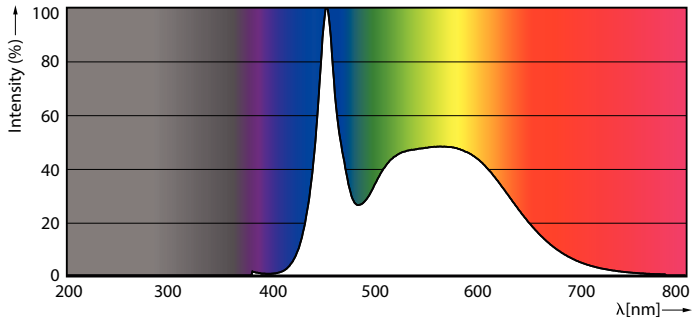
LEDtube MAS 8W G5 1000lm



LEDtube MAS 8W G5 1050lm 865

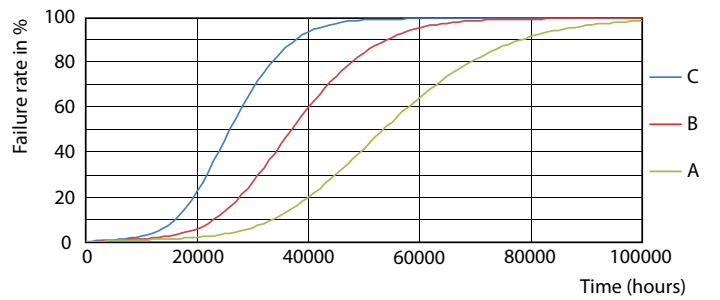
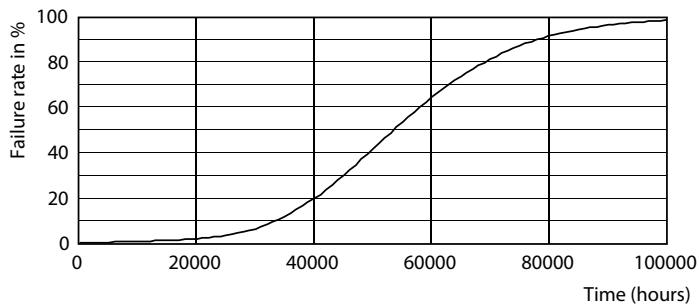
LEDtube Mains T5

Photometric data



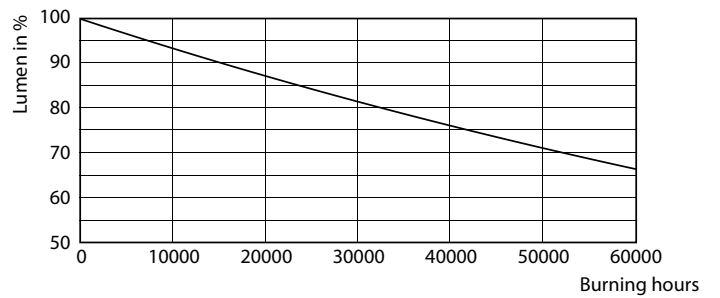
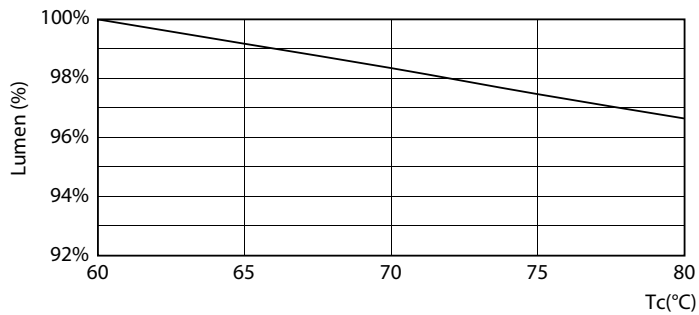
LEDtube MAS 8W G5 1050lm 865

Lifetime



LEDtube 50K-LED

LEDtube 50K FailureRate-LED

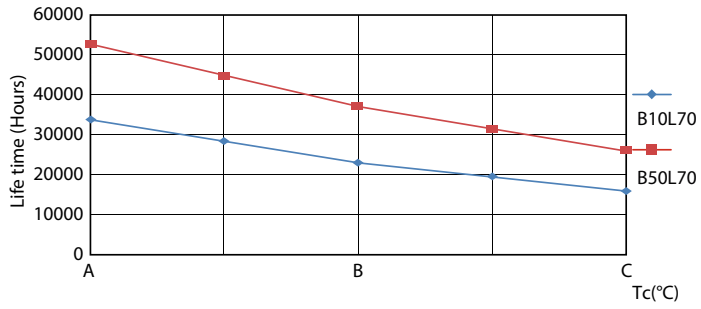


LEDtube 8W 50K LumenVsTc

LEDtube 50K-LMP

LEDtube Mains T5

Lifetime



LEDtube 50K LifetimeVsTc-LED

