



MASTER LEDtube EM/ Mains

Master LEDTube 1200 mm 18W 865 T8 I W

The Philips MASTER LEDtube integrates a LED light source into a traditional fluorescent form factor. Its unique design creates a perfectly uniform visual appearance which cannot be distinguished from traditional fluorescent. This product is the ideal solution for up lighting in general lighting applications.

Warnings and Safety

• -

Product data

General Information	
Cap base	G13 [Medium Bi-Pin Fluorescent]
EU RoHS compliant	Yes
Nominal lifetime (nom.)	40000 h
Switching cycle	50,000X

Light Technical	
Colour Code	865 [CCT of 6,500 K]
Technical Beam Angle (Nom)	160 °
Lamp Luminous Flux 25°C EL (Nom)	2100 lm
Colour Designation	Cool Daylight
Colour Temperature, horizontal (Nom)	6500 K
Lamp Luminous Efficacy EM (Nom)	116.67 lm/W
Colour consistency	<6
Colour Rendering Index,horiz (Nom)	82
LLMF at end of nominal lifetime (nom.)	70 %

Operating and Electrical	
Input frequency	50 to 60 Hz
Power (Rated) (Nom)	18 W
Starting time (nom.)	0.5 s
Warm-up time to 60% light (nom.)	instant full light s
Power factor (nom.)	0.92
Voltage (Nom)	100-240 V

Temperature	
T-ambient (max.)	45 °C
T-ambient (min.)	-20 °C
T storage (max.)	65 °C
T storage (min.)	-40 °C
T-Case maximum (nom.)	70 °C

Controls and Dimming	
Dimmable	No

MASTER LEDtube EM/Mains

Mechanical and Housing

Product length 1200 mm

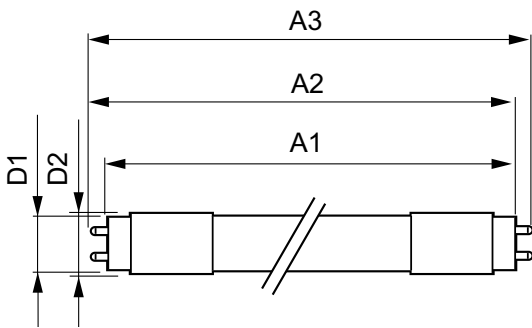
Approval and Application

Energy efficiency label (EEL) A+
 Energy-saving product Yes
 Suitable for accent lighting No
 Approval marks CE marking RoHS compliance KEMA Keur certificate
 Energy consumption kWh/1,000 hours 18 kWh

Product Data

Full product code 871869652406000
 Order product name Master LEDTube 1200 mm 18W 865 T8 I W
 EAN/UPC – product 8718696524060
 Order code 929001187812
 SAP numerator – quantity per pack 1
 Numerator – packs per outer box 10
 SAP material 929001187812
 SAP net weight (piece) 0.230 kg

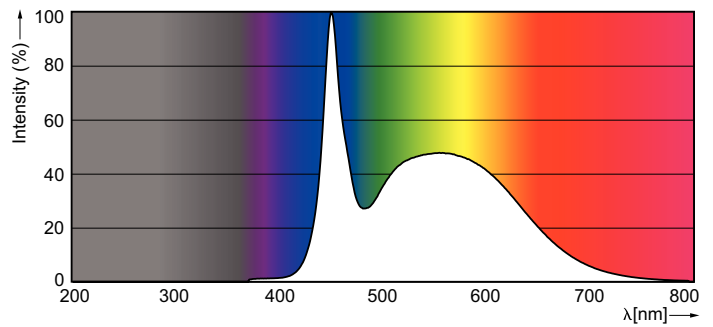
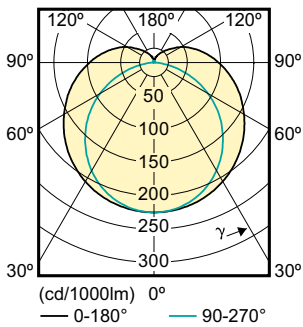
Dimensional drawing



LEDtube 1200mm 18W/865 T8 I W

Product	D1	D2	A1	A2	A3
Master LEDTube 1200 mm 18W 865 T8 I W	25.6 mm	27.8 mm	1198.1 mm	1205.2 mm	1212.3 mm

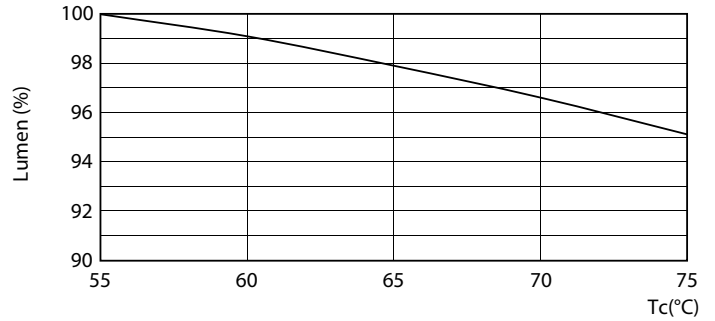
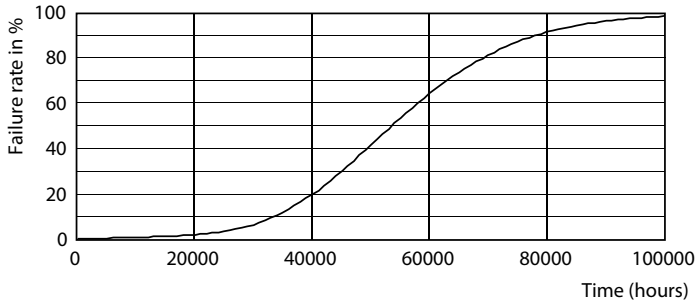
Photometric data



SDPO_MLEDGA_0069-Spectral Power distribution

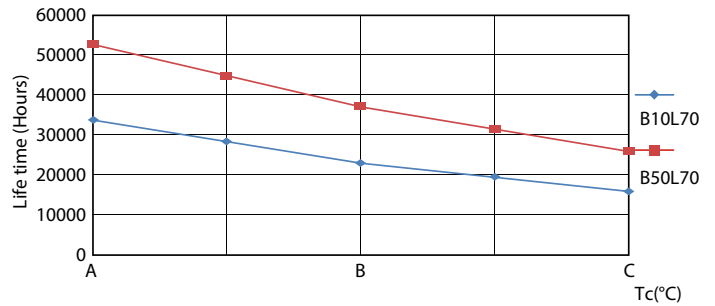
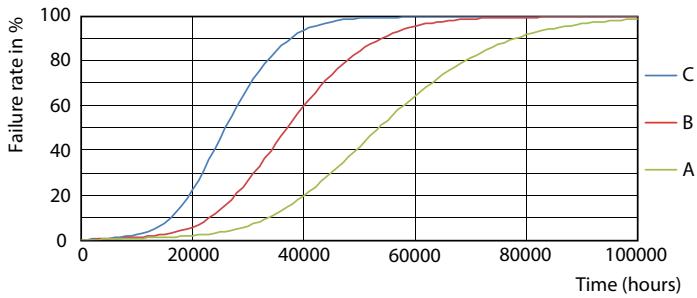
MASTER LEDtube EM/Mains

Lifetime



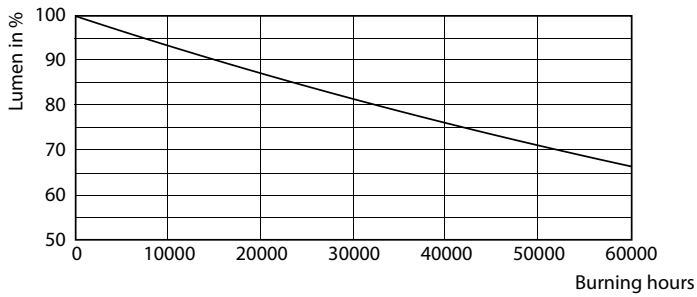
LEDTube 1200 mm 18W 840 T8 I W

LEDTube 1200 mm 18W 840 T8 I W LumenVsTc



LEDTube 1200 mm 18W 840 T8 I W FailureRate

LEDTube 1200 mm 18W 840 T8 I W LifetimeVsTc



LEDTube 1200 mm 18W 840 T8 I W

MASTER LEDtube EM/Mains

