



# MASTER LEDtube EM/ Mains



## MASTER LEDtube 1200mm UE 13.5W 865 T8

The Philips MASTER LEDtube integrates a LED light source into a traditional fluorescent form factor. Its unique design creates a perfectly uniform visual appearance which cannot be distinguished from traditional fluorescent. This product is the ideal solution for up lighting in general lighting applications.

### Warnings and Safety

• -

### Product data

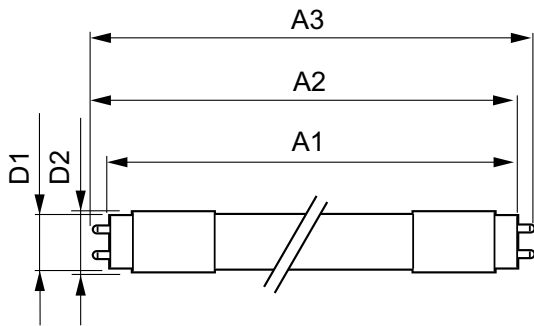
General Information		LLMF at end of nominal lifetime (nom.) 70 %	
Cap base	G13 ROT (Rotating) [ Medium Bi-Pin Fluorescent]	<b>Operating and Electrical</b>	
EU RoHS compliant	Yes	Input frequency	50 to 60 Hz
Nominal lifetime (nom.)	75000 h	Power (Rated) (Nom)	13.5 W
Switching cycle	200,000X	Lamp current (max.)	69 mA
	Sphere	Lamp current (min.)	56 mA
<b>Light Technical</b>		Starting time (nom.)	0.5 s
Colour Code	865 [ CCT of 6,500 K]	Warm-up time to 60% light (nom.)	0.5 s
Technical Beam Angle (Nom)	160 °	Power factor (nom.)	0.9
Lamp Luminous Flux 25°C EL (Nom)	2500 lm	Voltage (Nom)	220-240 V
Colour Designation	Cool Daylight	<b>Temperature</b>	
Colour Temperature, horizontal (Nom)	6500 K	T-ambient (max.)	45 °C
Lamp Luminous Efficacy EM (Nom)	185.00 lm/W	T-ambient (min.)	-20 °C
Colour consistency	<6	T storage (max.)	65 °C
Colour Rendering Index,horiz (Nom)	80	T storage (min.)	-40 °C

# MASTER LEDtube EM/Mains

T-Case maximum (nom.)	55 °C
<b>Controls and Dimming</b>	
Dimmable	No
<b>Mechanical and Housing</b>	
Lamp Finish	Frosted
Bulb material	Glass
Product length	1200 mm
Bulb shape	Tube, double-ended
<b>Approval and Application</b>	
Energy Efficiency Class	B
Energy-saving product	Yes
Approval marks	RoHS compliance CE marking KEMA Keur certificate

Approval marks	TUV
Energy consumption kWh/1,000 hours	14 kWh
	453168
<b>Product Data</b>	
Full product code	871951433974300
Order product name	MASTER LEDtube 1200mm UE 13.5W 865 T8
EAN/UPC – product	8719514339743
Order code	929003067102
SAP numerator – quantity per pack	1
Numerator – packs per outer box	10
SAP material	929003067102
SAP net weight (piece)	0.235 kg

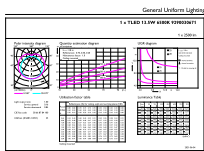
## Dimensional drawing



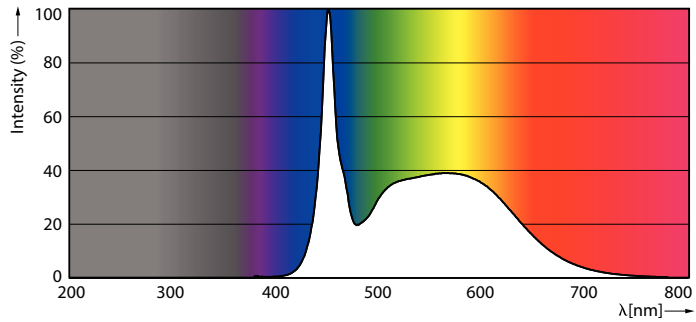
MASTER LEDtube 1200mm UE 13.5W 865 T8

Product	D1	D2	A1	A2	A3
MASTER LEDtube 1200mm UE 13.5W 865 T8	25.8 mm	28 mm	1198.2 mm	1205.3 mm	1212.4 mm

## Photometric data



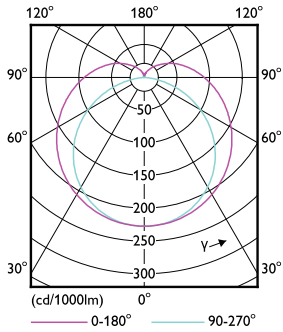
LEDtube MAS 13,5W G13 2500lm 865-GUL



Spectral Power Distribution Colour

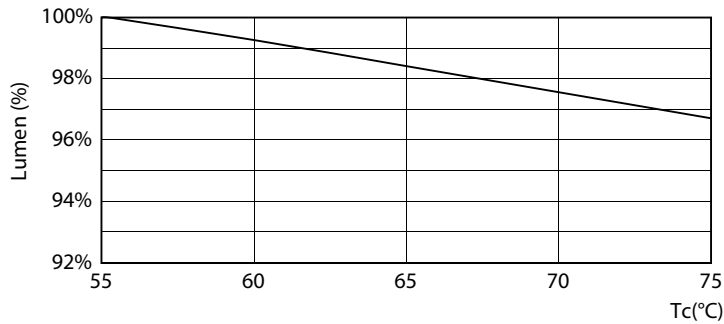
# MASTER LEDtube EM/Mains

## Photometric data



Light Distribution Diagram

## Lifetime



LEDtube MAS 13,5W 70K LumenVsTc-LMP

