



MASTER LEDtube EM/ Mains T8

MAS LEDtube 1200mm UO 14.7W 865 T8

The Philips MASTER LEDtube integrates a LED light source into a traditional fluorescent form factor. Its unique design creates a perfectly uniform visual appearance which cannot be distinguished from traditional fluorescent. This product is the ideal solution for up lighting in general lighting applications.

Warnings and Safety

- -
- -

Product data

| General Information | | Color Consistency | |
|------------------------------------|--|--|-------------|
| Cap-Base | G13 ROT (Rotating) [Medium Bi-Pin Fluorescent] | Color rendering index (CRI) | 80 |
| Nominal lifetime | 75,000 hour(s) | LLMF At End Of Nominal Lifetime (Nom) | 70 % |
| Switching Cycle | 200,000 | Flickering value (PstLM) | 0.5 |
| Lighting Technology | LED | Stroboscopic effect value (SVM) | 0.2 |
| Flux measurement reference | Sphere | Photobiological safety according to EN 62471 | RGO |
| CE mark | Yes | Operating and Electrical | |
| EU RoHS compliant | Yes | Line Frequency | 50 to 60 Hz |
| Light Technical | | Input Frequency | 50 to 60 Hz |
| Color Code | 865 [CCT of 6500K] | Power Consumption | 14.7 W |
| Beam Angle (Nom) | 160 degree(s) | Starting Time (Nom) | 0.5 s |
| Luminous Flux | 2,500 lumen | Warm-up time to 60% light | 0.5 s |
| Color Designation | Cool Daylight | Power Factor (Fraction) | 0.9 |
| Correlated Color Temperature (Nom) | 6500 K | Voltage (Nom) | 220-240 V |
| Luminous Efficacy (rated) (Nom) | 170 lm/W | LED alternative to fluorescent lamp power | 36 W |

MASTER LEDtube EM/Mains T8

Temperature

| | |
|---------------------------|-----------------|
| Ambient temperature range | -20 °C to 45 °C |
| T-Case Maximum (Nom) | 55 °C |

Controls and Dimming

| | |
|----------|----|
| Dimmable | No |
|----------|----|

Mechanical and Housing

| | |
|----------------|--------------------|
| Bulb Finish | Frosted |
| Bulb Material | Plastic |
| Product Length | 1,200 mm |
| Bulb Shape | Tube, double-ended |

Approval and Application

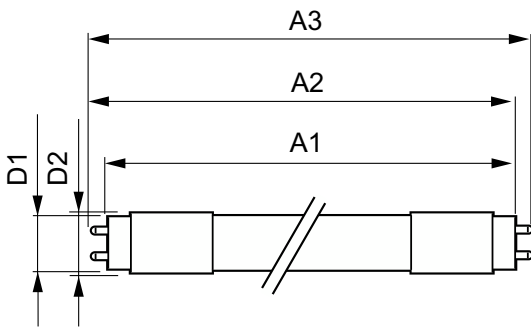
| | |
|-------------------------|---|
| Energy Efficiency Class | C |
| Energy Saving Product | Yes |
| Approval Marks | RoHS compliance TUV CE marking KEMA Keur certificate |

| | |
|-------------------------------|---------|
| Energy Consumption kWh/1000 h | 15 kWh |
| EPREL Registration Number | 1206975 |

Product Data

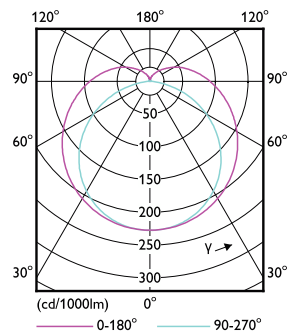
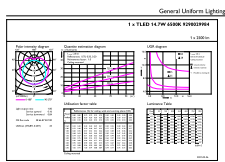
| | |
|---------------------------------|------------------------------------|
| Full product code | 871951431660700 |
| Order product name | MAS LEDtube 1200mm UO 14.7W 865 T8 |
| Order code | 929002998402 |
| Numerator - Quantity Per Pack | 1 |
| Numerator - Packs per outer box | 10 |
| Material Nr. (12NC) | 929002998402 |
| Full product name | MAS LEDtube 1200mm UO 14.7W 865 T8 |
| EAN/UPC - Case | 8719514316614 |
| EAN/UPC - Product/Case | 8719514316607 |

Dimensional drawing



| Product | D1 | D2 | A1 | A2 | A3 |
|------------------------------------|---------|-------|------------|------------|------------|
| MAS LEDtube 1200mm UO 14.7W 865 T8 | 25.8 mm | 28 mm | 1,198.2 mm | 1,205.3 mm | 1,212.4 mm |

Photometric data

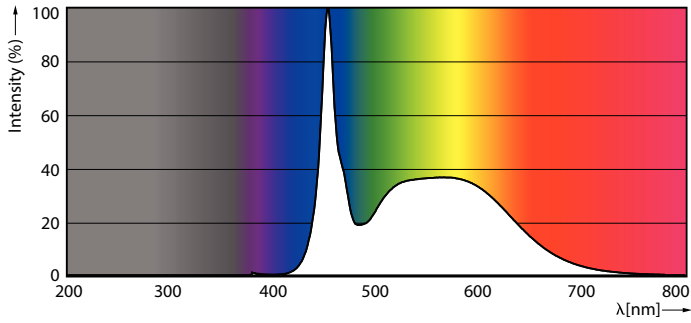


General uniform lighting - MAS LEDtube 1200mm UO 14.7W 865 T8

Light Distribution Diagram - MAS LEDtube 1200mm UO 14.7W 865 T8

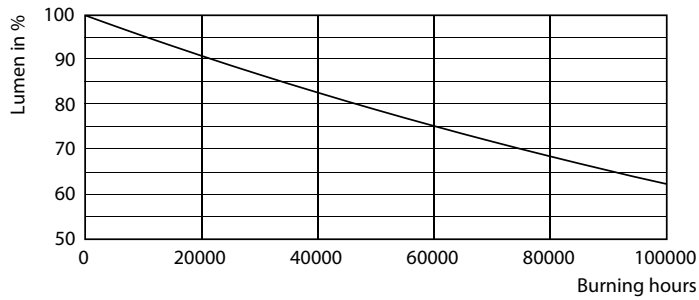
MASTER LEDtube EM/Mains T8

Photometric data

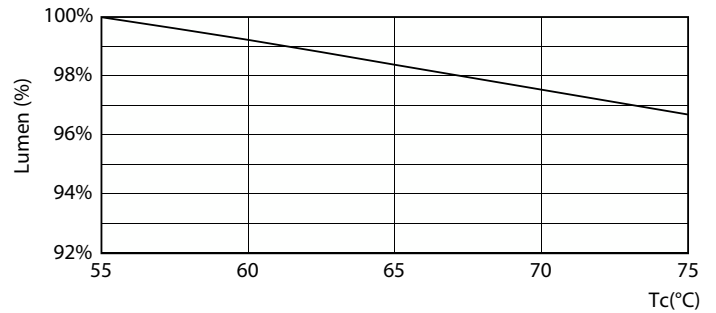


Spectral Power Distribution Colour - MAS LEDtube 1200mm UO 14.7W 865 T8

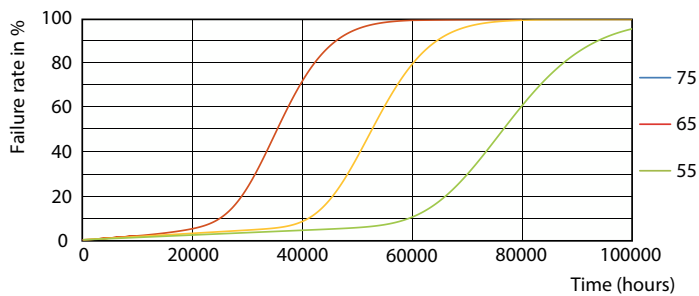
Lifetime



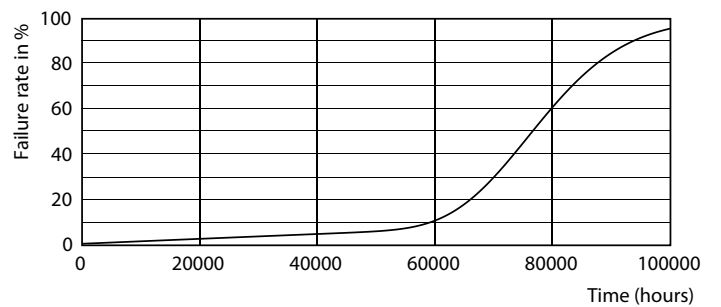
Lumen Maintenance Diagram - MAS LEDtube 1200mm UO 14.7W 865 T8



Lumen Maintenance Diagram - MAS LEDtube 1200mm UO 14.7W 865 T8



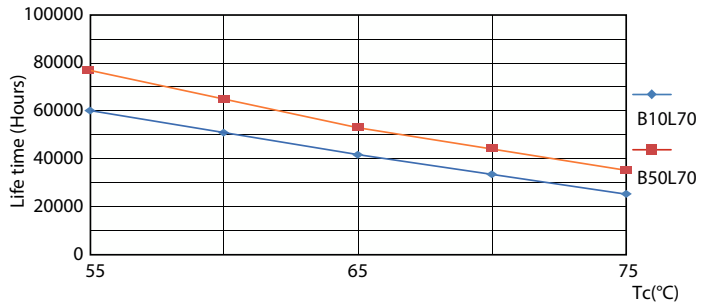
Life Expectancy Diagram - MAS LEDtube 1200mm UO 14.7W 865 T8



Life Expectancy Diagram - MAS LEDtube 1200mm UO 14.7W 865 T8

MASTER LEDtube EM/Mains T8

Lifetime



Life Expectancy Diagram - MAS LEDtube 1200mm UO 14.7W 865 T8

