



# MASTER LEDtube EM/ Mains T8

## MAS LEDtube 1200mm UO 14.7W 840 T8

The Philips MASTER LEDtube integrates a LED light source into a traditional fluorescent form factor. Its unique design creates a perfectly uniform visual appearance which cannot be distinguished from traditional fluorescent. This product is the ideal solution for up lighting in general lighting applications.

### Warnings and Safety

- -
- -

### Product data

General Information		Color Consistency	
Cap-Base	G13 ROT (Rotating) [Medium Bi-Pin Fluorescent]	Color rendering index (CRI)	80
Nominal lifetime	75,000 hour(s)	LLMF At End Of Nominal Lifetime (Nom)	70 %
Switching Cycle	200,000	Flickering value (PstLM)	0.5
Lighting Technology	LED	Stroboscopic effect value (SVM)	0.2
Flux measurement reference	Sphere	Photobiological safety according to EN 62471	RGO
CE mark	Yes	<b>Operating and Electrical</b>	
EU RoHS compliant	Yes	Line Frequency	50 to 60 Hz
<b>Light Technical</b>		Input Frequency	50 to 60 Hz
Color Code	840 [CCT of 4000K]	Power Consumption	14.7 W
Beam Angle (Nom)	160 degree(s)	Starting Time (Nom)	0.5 s
Luminous Flux	2,500 lumen	Warm-up time to 60% light	0.5 s
Color Designation	Cool White (CW)	Power Factor (Fraction)	0.9
Correlated Color Temperature (Nom)	4000 K	Voltage (Nom)	220-240 V
Luminous Efficacy (rated) (Nom)	170 lm/W	LED alternative to fluorescent lamp power	36 W

# MASTER LEDtube EM/Mains T8

## Temperature

Ambient temperature range	-20 °C to 45 °C
T-Case Maximum (Nom)	55 °C

## Controls and Dimming

Dimmable	No
----------	----

## Mechanical and Housing

Bulb Finish	Frosted
Bulb Material	Plastic
Product Length	1,200 mm
Bulb Shape	Tube, double-ended

## Approval and Application

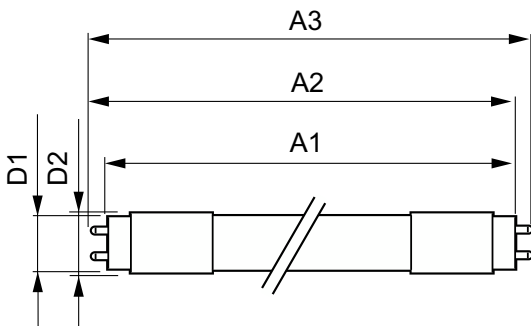
Energy Efficiency Class	C
Energy Saving Product	Yes
Approval Marks	RoHS compliance TUV CE marking KEMA Keur certificate

Energy Consumption kWh/1000 h	15 kWh
EPREL Registration Number	1206974

## Product Data

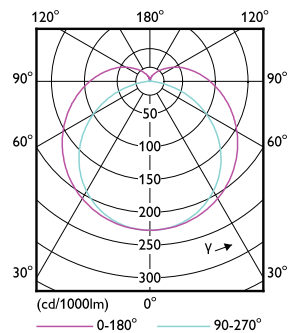
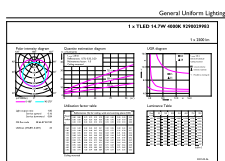
Full product code	871951431658400
Order product name	MAS LEDtube 1200mm UO 14.7W 840 T8
Order code	929002998302
Numerator - Quantity Per Pack	1
Numerator - Packs per outer box	10
Material Nr. (12NC)	929002998302
Full product name	MAS LEDtube 1200mm UO 14.7W 840 T8
EAN/UPC - Case	8719514316591
EAN/UPC - Product/Case	8719514316584

## Dimensional drawing



Product	D1	D2	A1	A2	A3
MAS LEDtube 1200mm UO 14.7W 840 T8	25.8 mm	28 mm	1,198.2 mm	1,205.3 mm	1,212.4 mm

## Photometric data

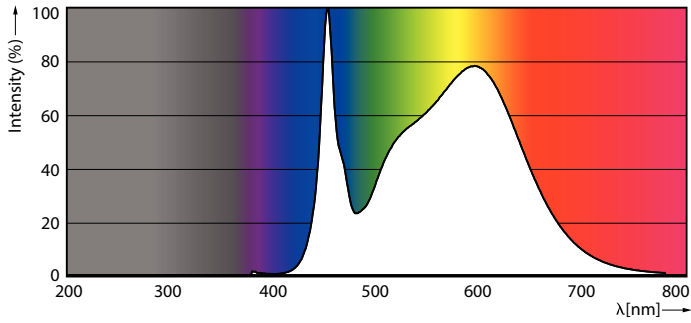


General uniform lighting - MAS LEDtube 1200mm UO 14.7W 840 T8

Light Distribution Diagram - MAS LEDtube 1200mm UO 14.7W 840 T8

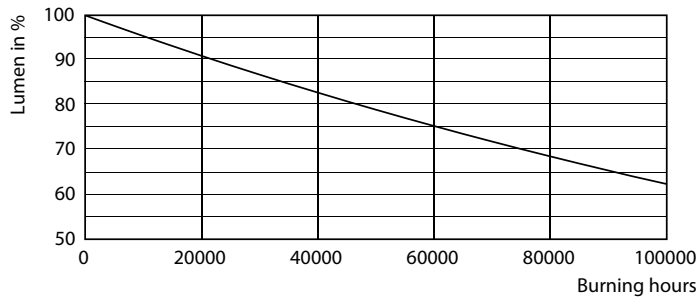
# MASTER LEDtube EM/Mains T8

## Photometric data

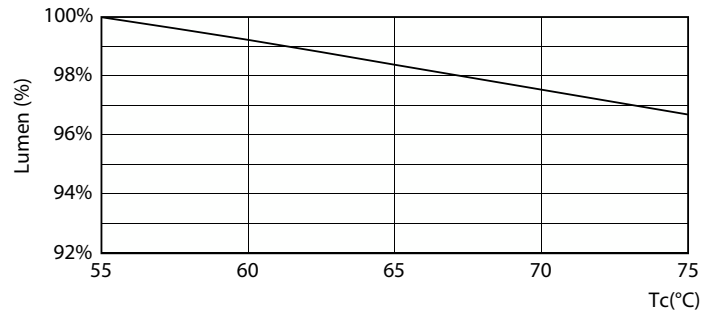


Spectral Power Distribution Colour - MAS LEDtube 1200mm UO 14.7W 840 T8

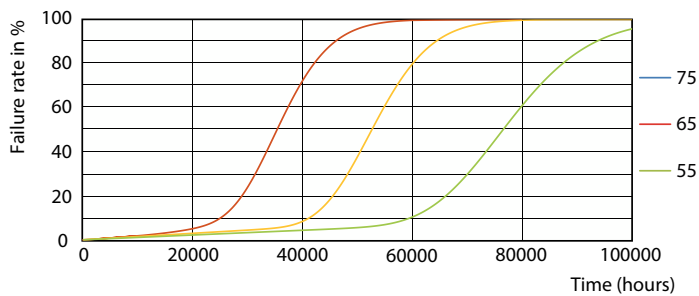
## Lifetime



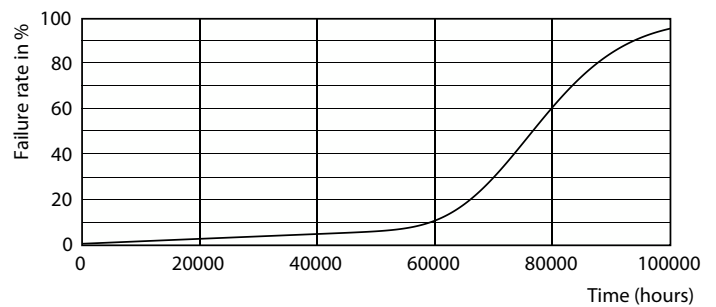
Lumen Maintenance Diagram - MAS LEDtube 1200mm UO 14.7W 840 T8



Lumen Maintenance Diagram - MAS LEDtube 1200mm UO 14.7W 840 T8



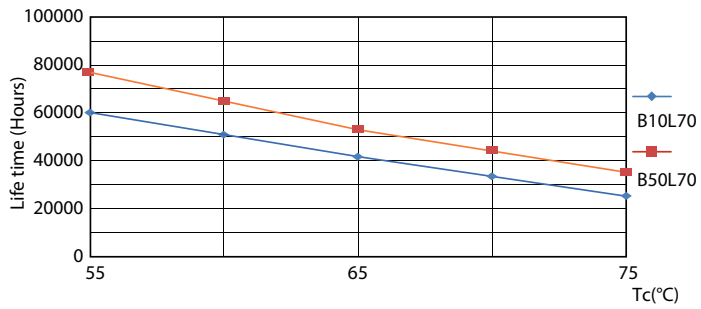
Life Expectancy Diagram - MAS LEDtube 1200mm UO 14.7W 840 T8



Life Expectancy Diagram - MAS LEDtube 1200mm UO 14.7W 840 T8

# MASTER LEDtube EM/Mains T8

## Lifetime



Life Expectancy Diagram - MAS LEDtube 1200mm UO 14.7W 840 T8

