



MASTER LEDtube Mains T5

MAS LEDtube 1500mm HE 20W 830 T5

The new Philips Master LEDtube Mains T5 brings simplicity to your lighting project. You don't need to pay attention to the driver technology anymore. Thanks to a unique design, Philips MASTER LEDtube Mains T5 installs in luminaires operating on mains power connection. So simple to operate! . Perfectly safe, reliable & easy to install Philips MASTER LEDtube Mains T5 is the ideal alternative to standard fluorescent tubes to maximize value over lifetime with high energy saving and lower maintenance costs.

Product data

Operating and Electrical	
Line Frequency	50 to 60 Hz
Input Frequency	50 to 60 Hz
Power Consumption	20 W
Starting Time (Nom)	0.5 s
Warm-up time to 60% light	0.5 s
Power Factor (Fraction)	0.9
Voltage (Nom)	100-240 V

Beam Angle (Nom)	200 degree(s)
Luminous Flux	2,800 lumen
Color Designation	White (WH)
Correlated Color Temperature (Nom)	3000 K
Luminous Efficacy (rated) (Nom)	140.00 lm/W
Color Consistency	<6
Color rendering index (CRI)	80
LLMF At End Of Nominal Lifetime (Nom)	70 %

General Information	
Cap-Base	G5 [G5]
Nominal lifetime	50,000 hour(s)
Switching Cycle	200,000
Lighting Technology	LED
Flux measurement reference	Sphere

Ambient temperature range	-20 °C to 45 °C
T-Case Maximum (Nom)	75 °C

Controls and Dimming	
Dimmable	No

Mechanical and Housing	
Bulb Finish	Frosted

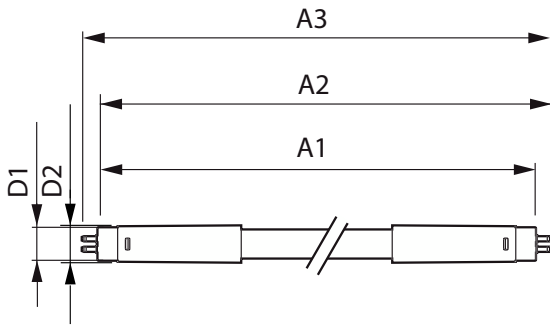
Light Technical	
Color Code	830 [CCT of 3000K]

MASTER LEDtube Mains T5

Bulb Material	Glass
Product Length	1,500 mm
Bulb Shape	Tube, double-ended
Approval and Application	
Energy Saving Product	Yes
Approval Marks	RoHS compliance CE marking KEMA Keur certificate
Energy Consumption kWh/1000 h	20 kWh
EPREL Registration Number	467,354
EU RoHS compliant	Yes

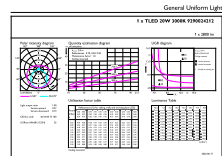
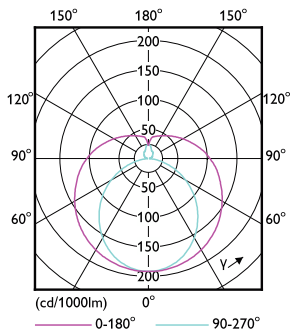
Product Data	
Full product code	871869978355600
Order product name	MAS LEDtube 1500mm HE 20W 830 T5
Order code	929002421208
Numerator - Quantity Per Pack	1
Numerator - Packs per outer box	10
Material number (12NC)	929002421208
Full product name	MAS LEDtube 1500mm HE 20W 830 T5
EAN/UPC - Case	8718699783563

Dimensional drawing



Product	D1	D2	A1	A2	A3
MAS LEDtube 1500mm HE 20W 830 T5	15.8 mm	19 mm	1,449 mm	1,454.9 mm	1,463.2 mm

Photometric data



Light Distribution Diagram - MAS LEDtube 1500mm HE 20W 830 T5

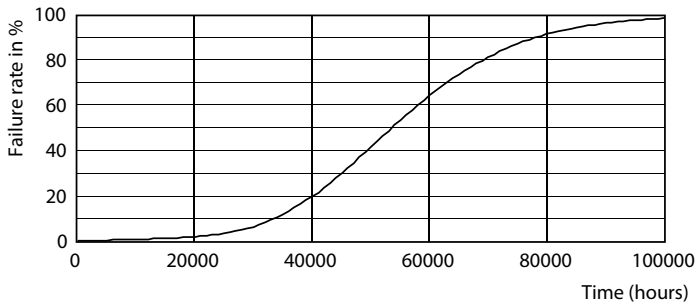
MASTER LEDtube Mains T5

Photometric data

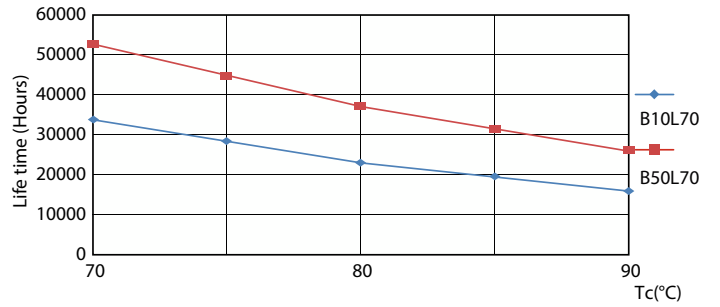


Spectral Power Distribution Colour - MAS LEDtube 1500mm HE 20W 830 T5

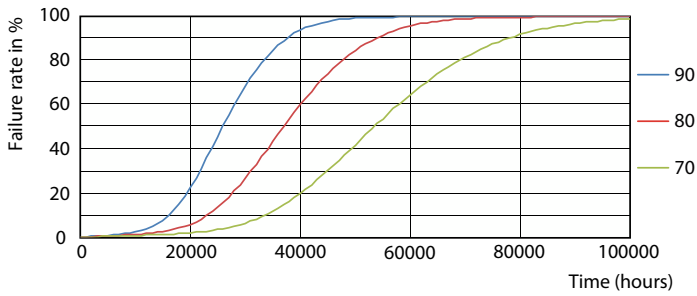
Lifetime



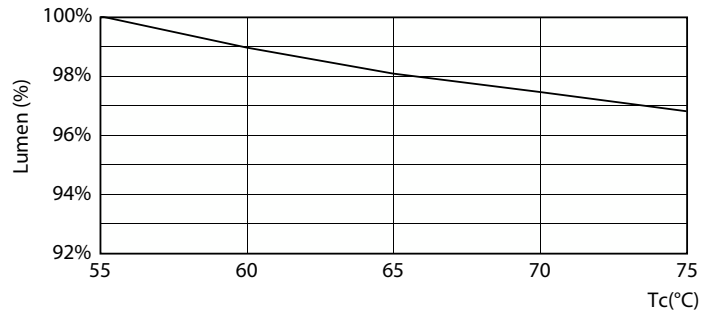
Life Expectancy Diagram - MAS LEDtube 1500mm HE 20W 830 T5



Life Expectancy Diagram - MAS LEDtube 1500mm HE 20W 830 T5



Life Expectancy Diagram - MAS LEDtube 1500mm HE 20W 830 T5



Lumen Maintenance Diagram - MAS LEDtube 1500mm HE 20W 830 T5

MASTER LEDtube Mains T5

Lifetime



Lumen Maintenance Diagram - MAS LEDtube 1500mm HE 20W 830 T5

