



# MASTER LEDtube InstantFit HF T5

## MAS LEDtube HF 600mm HE 8W 840 T5

The Philips MASTER LEDtube integrates a LED light source into a traditional fluorescent form factor. Its unique design creates a perfectly uniform visual appearance, which cannot be distinguished from traditional fluorescent. These T5 lighting tubes are the right choice for absolute performance and are designed to stand up to everyday conditions. Unparalleled savings thanks to low energy consumption and an exceptionally long lifetime make these T5 LED tubes the choice for every demanding application.

### Product data

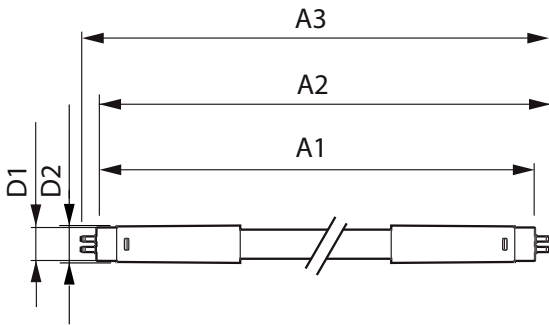
General Information		LLMF At End Of Nominal Lifetime (Nom)		70 %
Cap-Base	G5 [G5]	Photobiological safety according to EN 62471 RGO		
Nominal lifetime	60,000 hour(s)	Operating and Electrical		
Switching Cycle	50,000	Line Frequency	30K to 100K Hz	
Lighting Technology	LED	Input Frequency	30K to 100K Hz	
Flux measurement reference	Sphere	Power Consumption	8 W	
CE mark	Yes	Starting Time (Nom)	0.5 s	
EU RoHS compliant	Yes	Warm-up time to 60% light	0.5 s	
Light Technical		Power Factor (Fraction)	0.92	
Color Code	840 [CCT of 4000K]	Voltage (Nom)	40-70 V	
Beam Angle (Nom)	200 degree(s)	LED alternative to fluorescent lamp power	14 W	
Luminous Flux	1,050 lumen	Temperature		
Color Designation	Cool White (CW)	Ambient temperature range	-20 °C to 45 °C	
Correlated Color Temperature (Nom)	4000 K	T-Case Maximum (Nom)	65 °C	
Luminous Efficacy (rated) (Nom)	131 lm/W			
Color Consistency	<6			
Color rendering index (CRI)	80			

# MASTER LEDtube InstantFit HF T5

Controls and Dimming	
Dimmable	Yes - Check ballast compatibility
Mechanical and Housing	
Bulb Finish	Frosted
Bulb Material	Glass
Product Length	600 mm
Bulb Shape	Tube, double-ended
Approval and Application	
Energy Efficiency Class	E
Energy Saving Product	Yes
Approval Marks	RoHS compliance TUV CE marking KEMA Keur certificate
Energy Consumption kWh/1000 h	8 kWh

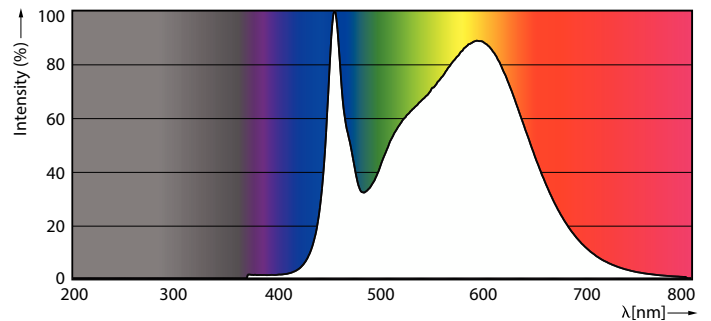
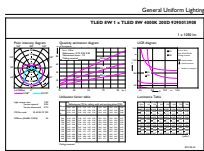
EPREL Registration Number	1384132
Product Data	
Full product code	871869674325600
Order product name	MAS LEDtube HF 600mm HE 8W 840 T5
Order code	929001390802
Numerator - Quantity Per Pack	1
Numerator - Packs per outer box	10
Material Nr. (12NC)	929001390802
Full product name	MAS LEDtube HF 600mm HE 8W 840 T5
EAN/UPC - Case	8718696743263
EAN/UPC - Product/Case	8718696743256

## Dimensional drawing



Product	D1	D2	A1	A2	A3
MAS LEDtube HF 600mm HE 8W 840 T5	15.5 mm	18.8 mm	549 mm	556.1 mm	563.2 mm

## Photometric data

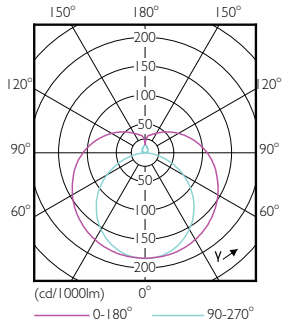


General uniform lighting - MAS LEDtube HF 600mm HE 8W 840 T5

Spectral Power Distribution Colour - MAS LEDtube HF 600mm HE 8W 840 T5

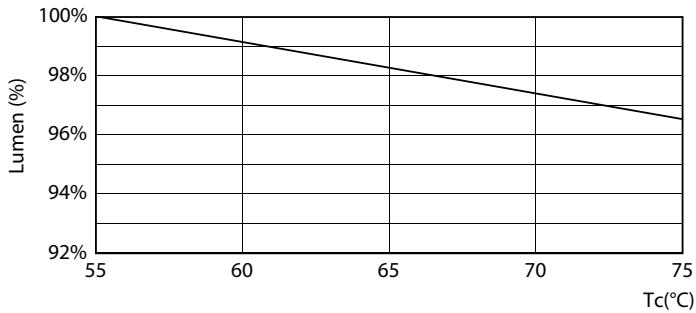
# MASTER LEDtube InstantFit HF T5

## Photometric data

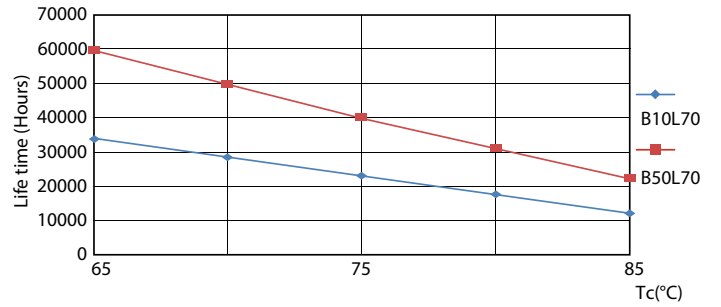


Light Distribution Diagram - MAS LEDtube HF 600mm HE 8W 840 T5

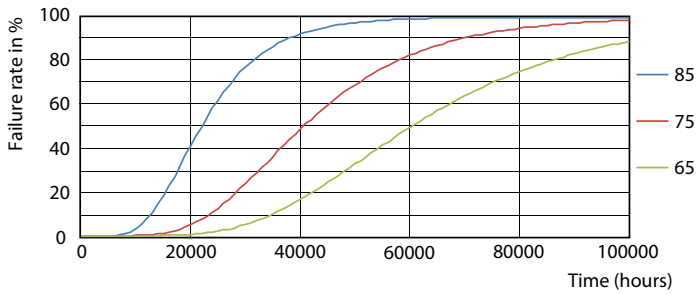
## Lifetime



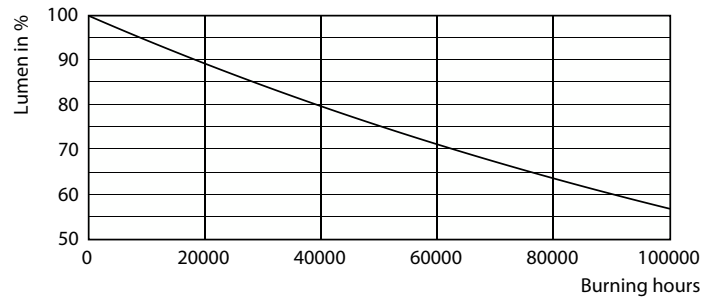
Lumen Maintenance Diagram - MAS LEDtube HF 600mm HE 8W 840 T5



Life Expectancy Diagram - MAS LEDtube HF 600mm HE 8W 840 T5



Life Expectancy Diagram - MAS LEDtube HF 600mm HE 8W 840 T5



Lumen Maintenance Diagram - MAS LEDtube HF 600mm HE 8W 840 T5

# MASTER LEDtube InstantFit HF T5

## Lifetime



Life Expectancy Diagram - MAS LEDtube HF 600mm HE 8W 840 T5

