



MASTER LEDtube Mains T5

MAS LEDtube 1200mm HE 16.5W 840 T5

The new Philips Master LEDtube Mains T5 brings simplicity to your lighting project. You don't need to pay attention to the driver technology anymore. Thanks to a unique design, Philips MASTER LEDtube Mains T5 installs in luminaires operating on mains power connection. So simple to operate! . Perfectly safe, reliable & easy to install Philips MASTER LEDtube Mains T5 is the ideal alternative to standard fluorescent tubes to maximize value over lifetime with high energy saving and lower maintenance costs.

Product data

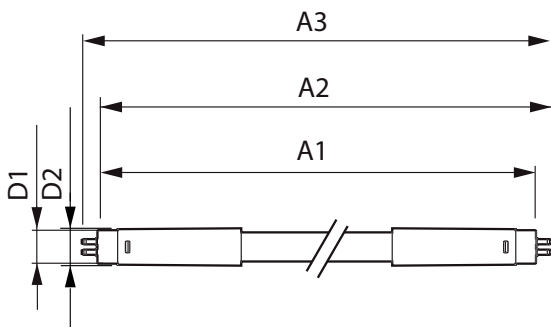
General Information		Operating and Electrical	
Cap-Base	G5 [G5]	Line Frequency	50 to 60 Hz
Nominal lifetime	50,000 hour(s)	Input Frequency	50 to 60 Hz
Switching Cycle	200,000	Power Consumption	16.5 W
Lighting Technology	LED	Starting Time (Nom)	0.5 s
		Warm-up time to 60% light	0.5 s
		Power Factor (Fraction)	0.9
		Voltage (Nom)	100-240 V
Light Technical		Temperature	
Color Code	840 [CCT of 4000K]	Ambient temperature range	-20 °C to 45 °C
Beam Angle (Nom)	200 degree(s)	T-Case Maximum (Nom)	70 °C
Luminous Flux	2,500 lumen		
Color Designation	Cool White (CW)	Controls and Dimming	
Correlated Color Temperature (Nom)	4000 K	Dimmable	No
Luminous Efficacy (rated) (Nom)	151.00 lm/W		
Color Consistency	<6	Mechanical and Housing	
Color rendering index (CRI)	80	Bulb Finish	Frosted
LLMF At End Of Nominal Lifetime (Nom)	70 %		

MASTER LEDtube Mains T5

Bulb Material	Glass
Product Length	1,200 mm
Bulb Shape	Tube, double-ended
Approval and Application	
Energy Saving Product	Yes
Approval Marks	RoHS compliance CE marking KEMA Keur certificate
Energy Consumption kWh/1000 h	17 kWh
EU RoHS compliant	Yes

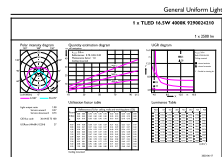
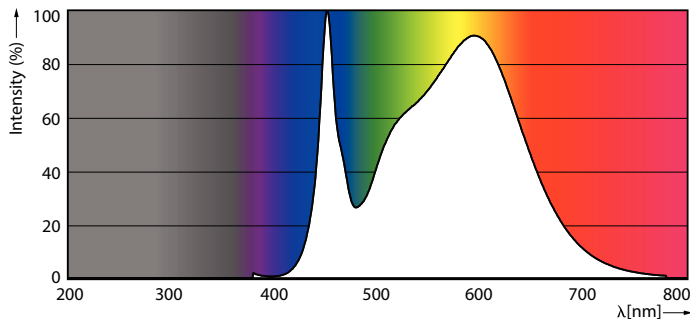
Product Data	
Full product code	871869978351800
Order product name	MAS LEDtube 1200mm HE 16.5W 840 T5
Order code	929002421008
Numerator - Quantity Per Pack	1
Numerator - Packs per outer box	10
Material number (12NC)	929002421008
Full product name	MAS LEDtube 1200mm HE 16.5W 840 T5
EAN/UPC - Case	8718699783525

Dimensional drawing



Product	D1	D2	A1	A2	A3
MAS LEDtube 1200mm HE 16.5W 840 T5	15.8 mm	19 mm	1,149 mm	1,156.1 mm	1,163.2 mm

Photometric data

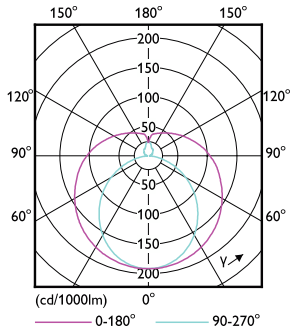


Spectral Power Distribution Colour - MAS LEDtube 1200mm HE 16.5W 840 T5

General uniform lighting - MAS LEDtube 1200mm HE 16.5W 840 T5

MASTER LEDtube Mains T5

Photometric data

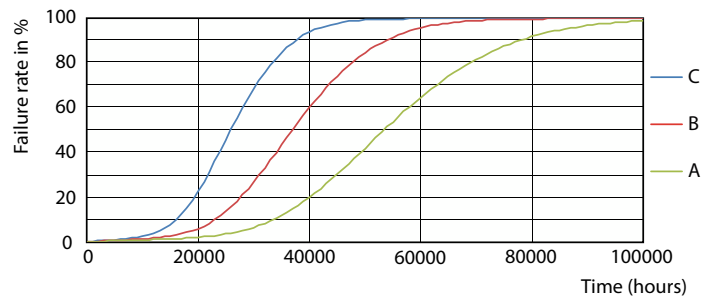


Light Distribution Diagram - MAS LEDtube 1200mm HE 16.5W 840 T5

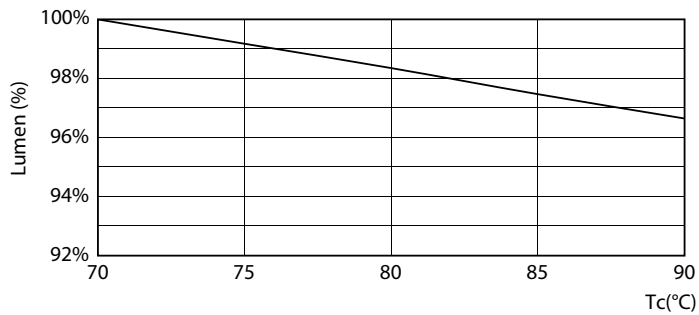
Lifetime



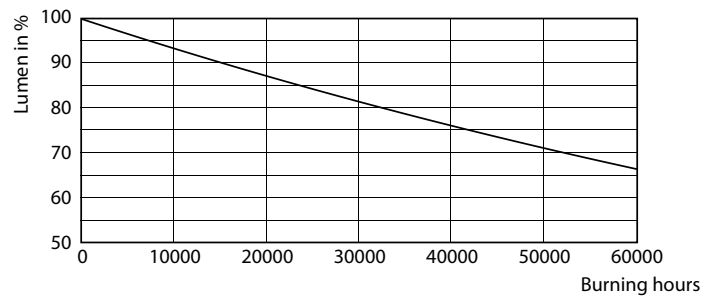
Life Expectancy Diagram - MAS LEDtube 1200mm HE 16.5W 840 T5



Life Expectancy Diagram



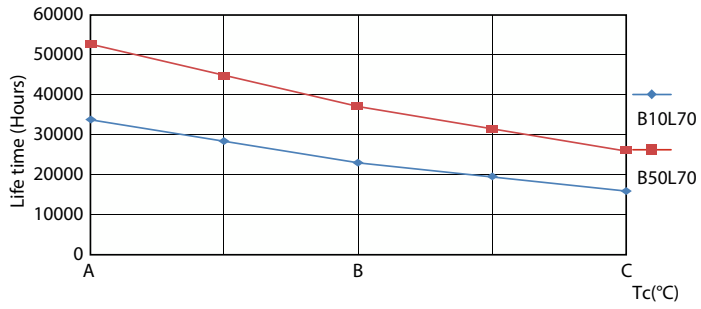
Lumen Maintenance Diagram - MAS LEDtube 1200mm HE 16.5W 840 T5



Lumen Maintenance Diagram - MAS LEDtube 1200mm HE 16.5W 840 T5

MASTER LEDtube Mains T5

Lifetime



Life Expectancy Diagram

