



MASTER LEDspot MV Value

MASTER LED spot VLE D 6.2-80W GU10 940 36D

Delivering a warm, halogen-like accent beam, MASTER LEDspot MV is a perfect fit for spot lighting (track, corridors, lift lobbies, display cases and cabinets) in the hospitality industry. It is particularly suitable to public areas where the light is on 24/7, such as lobbies, corridors, stairwells. MASTER LEDspot MV delivers huge energy savings and minimises maintenance cost without any compromise on brightness, enabling hospitality owners to achieve a return on their investment within one year. These LEDspots are compatible with most existing fixtures with a GU10 holder and designed as a retrofit replacement for halogen or incandescent spots. The dimmable versions drive further efficiencies, while helping to create the desired atmosphere. For environments where the right atmosphere needs to be created (e.g. bars and restaurants), the “DimTone” feature could be useful. This is a LED feature that creates a warmer tone once light is dimmed down to lower intensities.

Warnings and Safety

- Operating temperature range is between -20° C and 45° C ambient
- Only to apply in dry or damp locations and most of open fixtures with lamp-holders that offer sufficient space (10 mm free air space)
- Not intended for use with emergency light fixtures or exit lights

Product data

General Information		Light Technical	
Cap base	GU10 [GU10]		Narrow Cone
EU RoHS compliant	Yes	Colour Code	940 [CCT of 4,000 K]
Nominal lifetime (nom.)	25000 h	Technical Beam Angle (Nom)	36 °
Switching cycle	50.000X	Lamp Luminous Flux 25°C EL (Nom)	575 lm
Technical type	6.2-80W		

MASTER LEDspot MV Value

Luminous intensity (nom.)	850 cd
Colour Designation	Cool White (CW)
Colour Temperature, horizontal (Nom)	4000 K
Lamp Luminous Efficacy EM (Nom)	92.00 lm/W
Colour consistency	<6
Colour Rendering Index,horiz (Nom)	90
LLMF at end of nominal lifetime (nom.)	70 %
Luminous flux in 90° cone (rated)	575 lm

Operating and Electrical

Input frequency	50 to 60 Hz
Power (Rated) (Nom)	6.2 W
Lamp current (nom.)	33 mA
Wattage equivalent	80 W
Starting time (nom.)	0.5 s
Warm-up time to 60% light (nom.)	0.5 s
Power factor (nom.)	0.88
Voltage (Nom)	220-240 V

Temperature

T-Case maximum (nom.)	80 °C
-----------------------	-------

Mechanical and Housing

Bulb shape	PAR16 [PAR 2 inch]
------------	---------------------

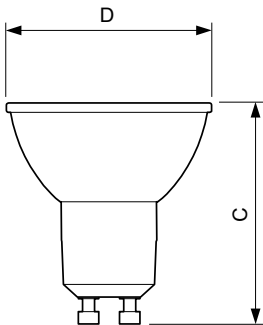
Approval and Application

Energy Efficiency Class	F
Suitable for accent lighting	Yes
Energy consumption kWh/1,000 hours	7 kWh
	391908

Product Data

Full product code	871869970523700
Order product name	MASTER LED spot VLE D 6.2-80W GU10 940 36D
EAN/UPC – product	8718699705237
Order code	929002066002
SAP numerator – quantity per pack	1
Numerator – packs per outer box	10
SAP material	929002066002
SAP net weight (piece)	0.040 kg

Dimensional drawing

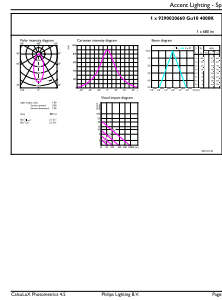
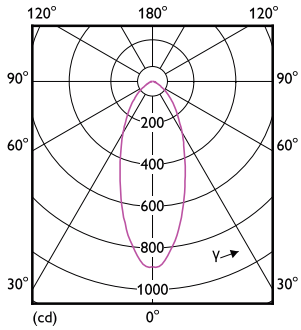


GU10 7.5-80W 680lm 36D 4000K GU10 15khrs

Product	D	C
MASTER LED spot VLE D 6.2-80W GU10 940 36D	50 mm	54 mm

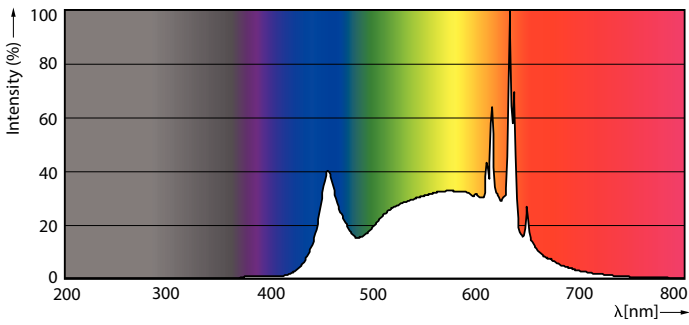
MASTER LEDspot MV Value

Photometric data



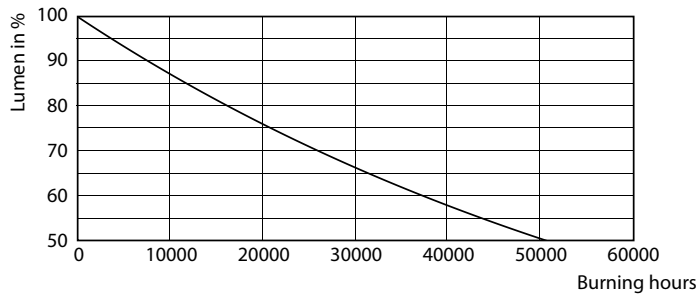
GU10 7.5-80W 680lm 36D 4000K GU10 15khrs

GU10 7.5-80W 680lm 36D 4000K GU10 15khrs

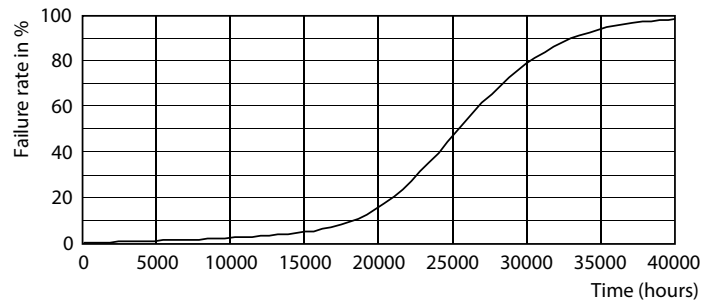


GU10 7.5-80W 680lm 36D 4000K GU10 15khrs

Lifetime



GU10 7.5-80W 650lm 2700K GU10 D 15khrs



GU10 7.5-80W 650lm 2700K GU10 D 15khrs

MASTER LEDspot MV Value

