



# MASTER LEDtube EM/ Mains

## MASTER LEDtube 1500mm HO 18.2W 865 T8

The Philips MASTER LEDtube integrates a LED light source into a traditional fluorescent form factor. Its unique design creates a perfectly uniform visual appearance which cannot be distinguished from traditional fluorescent. This product is the ideal solution for up lighting in general lighting applications.

### Warnings and Safety

• -

### Product data

General Information	
Cap base	G13 ROT (Rotating) [ Medium Bi-Pin Fluorescent]
EU RoHS compliant	Yes
Nominal lifetime (nom.)	70000 h
Switching cycle	200,000X Sphere

Light Technical	
Colour Code	865 [ CCT of 6,500 K]
Technical Beam Angle (Nom)	160 °
Lamp Luminous Flux 25°C EL (Nom)	3100 lm
Colour Designation	Cool Daylight
Colour Temperature, horizontal (Nom)	6500 K
Lamp Luminous Efficacy EM (Nom)	170.00 lm/W
Colour consistency	<6
Colour Rendering Index,horiz (Nom)	80

Operating and Electrical	
Input frequency	50 to 60 Hz
Power (Rated) (Nom)	18.2 W
Lamp current (max.)	93 mA
Lamp current (min.)	77 mA
Starting time (nom.)	0.5 s
Warm-up time to 60% light (nom.)	0.5 s
Power factor (nom.)	0.9
Voltage (Nom)	220-240 V

Temperature	
T-ambient (max.)	45 °C
T-ambient (min.)	-20 °C
T storage (max.)	65 °C
T storage (min.)	-40 °C

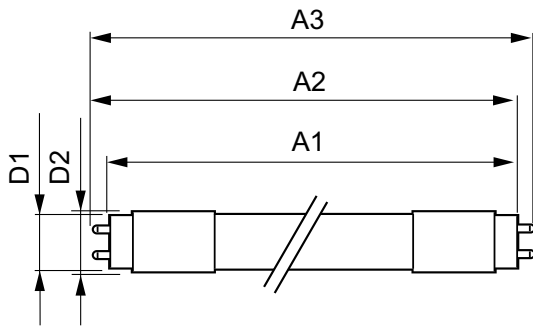
LLMF at end of nominal lifetime (nom.)	70 %
----------------------------------------	------

# MASTER LEDtube EM/Mains

T-Case maximum (nom.)	55 °C
<b>Controls and Dimming</b>	
Dimmable	No
<b>Mechanical and Housing</b>	
Lamp Finish	Frosted
Bulb material	Plastic
Product length	1500 mm
Bulb shape	Tube, double-ended
<b>Approval and Application</b>	
Energy Efficiency Class	C
Energy-saving product	Yes
Approval marks	RoHS compliance CE marking KEMA Keur certificate

Energy consumption kWh/1,000 hours	19 kWh
	403595
<b>Product Data</b>	
Full product code	871869959245500
Order product name	MASTER LEDtube 1500mm HO 18.2W 865 T8
EAN/UPC – product	8718699592455
Order code	929001923102
SAP numerator – quantity per pack	1
Numerator – packs per outer box	10
SAP material	929001923102
SAP net weight (piece)	0.450 kg

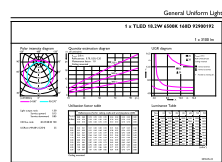
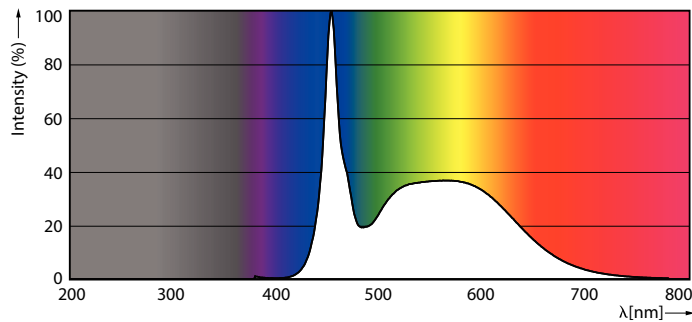
## Dimensional drawing



Product	D1	D2	A1	A2	A3
MASTER LEDtube 1500mm HO 18.2W 865 T8	25.8 mm	28 mm	1498.8 mm	1505.9 mm	1513 mm

TLED master HE 3100lm 18.2w 5ft 6500k

## Photometric data



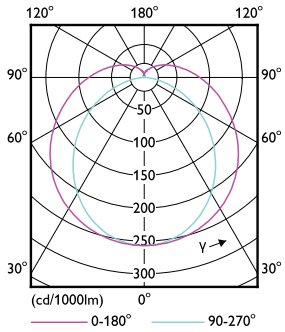
LEDtube MAS HO 18.2W G13 865 16D ND

LEDtube MAS SLR 18,2W G13 3100lm 865-POC-POC

LEDtube MAS HO 18.2W G13 865 16D ND

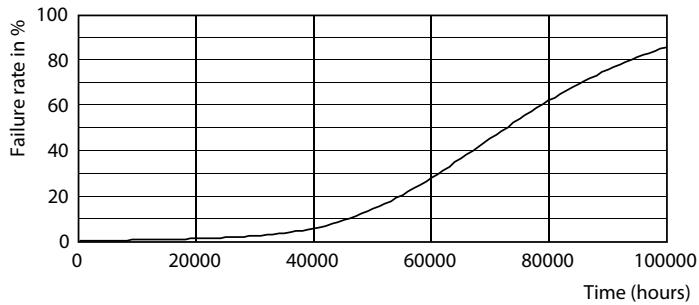
# MASTER LEDtube EM/Mains

## Photometric data

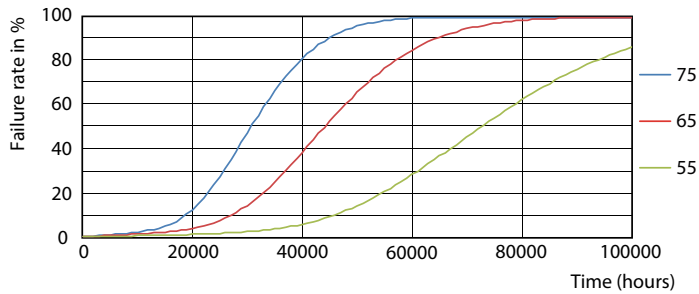


LEDtube MAS HO 12.5W G13 830 16D ND

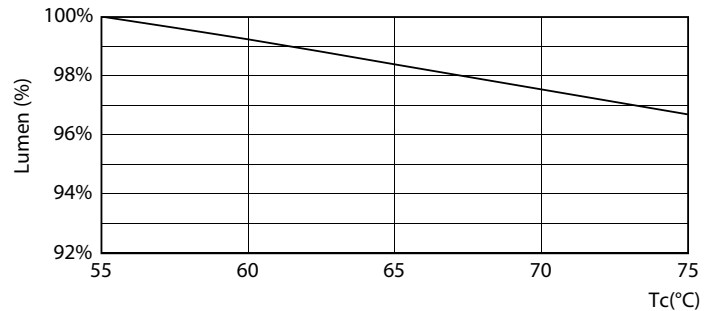
## Lifetime



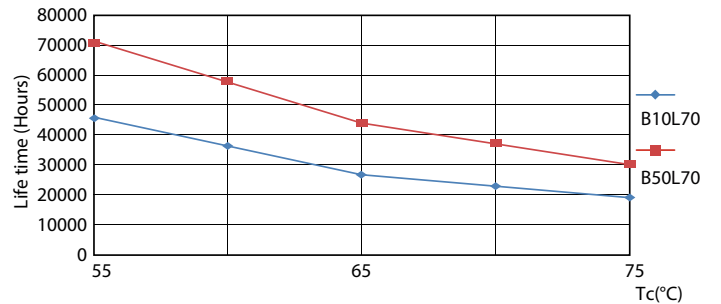
LEDtube\_70K-LED



LEDtube MAS SLR 18,2W 70K FailureRate-LED-LED



LEDtube MAS SLR 18,2W 70K LumenVsTc-LMP-LMP



LEDtube MAS SLR 18,2W 70K LifetimeVsTc-LED-LED

# MASTER LEDtube EM/Mains

## Lifetime



LEDtube\_70K-LMP

