



MASTER LEDtube EM/ Mains

MASTER LEDtube 1500mm HO 18.2W 840 T8

The Philips MASTER LEDtube integrates a LED light source into a traditional fluorescent form factor. Its unique design creates a perfectly uniform visual appearance which cannot be distinguished from traditional fluorescent. This product is the ideal solution for up lighting in general lighting applications.

Warnings and Safety

• -

Product data

| General Information | |
|-------------------------|--|
| Cap base | G13 ROT (Rotating) [Medium Bi-Pin Fluorescent] |
| EU RoHS compliant | Yes |
| Nominal lifetime (nom.) | 60000 h |
| Switching cycle | 200,000X |

| Light Technical | |
|--|-----------------------|
| Colour Code | 840 [CCT of 4,000 K] |
| Technical Beam Angle (Nom) | 160 ° |
| Lamp Luminous Flux 25°C EL (Nom) | 3100 lm |
| Colour Designation | Cool White (CW) |
| Colour Temperature, horizontal (Nom) | 4000 K |
| Lamp Luminous Efficacy EM (Nom) | 170.00 lm/W |
| Colour consistency | <6 |
| Colour Rendering Index,horiz (Nom) | 83 |
| LLMF at end of nominal lifetime (nom.) | 70 % |

| Operating and Electrical | |
|----------------------------------|-------------|
| Input frequency | 50 to 60 Hz |
| Power (Rated) (Nom) | 18.2 W |
| Lamp current (max.) | 87 mA |
| Lamp current (min.) | 79 mA |
| Starting time (nom.) | 0.5 s |
| Warm-up time to 60% light (nom.) | 0.5 s |
| Power factor (nom.) | 0.9 |
| Voltage (Nom) | 220-240 V |

| Temperature | |
|-----------------------|--------|
| T-ambient (max.) | 45 °C |
| T-ambient (min.) | -20 °C |
| T storage (max.) | 65 °C |
| T storage (min.) | -40 °C |
| T-Case maximum (nom.) | 55 °C |

MASTER LEDtube EM/Mains

Controls and Dimming

| | |
|----------|----|
| Dimmable | No |
|----------|----|

Mechanical and Housing

| | |
|----------------|---------|
| Bulb material | Plastic |
| Product length | 1500 mm |

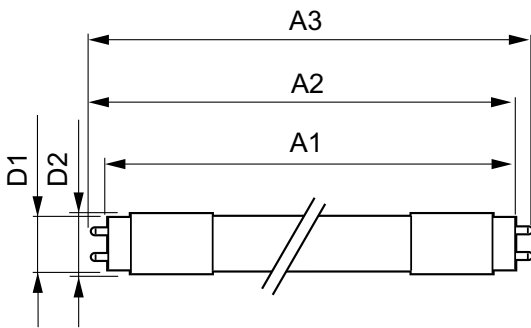
Approval and Application

| | |
|------------------------------------|--|
| Energy efficiency label (EEL) | A++ |
| Energy-saving product | Yes |
| Approval marks | RoHS compliance CE marking KEMA Keur certificate |
| Energy consumption kWh/1,000 hours | 19 kWh |

Product Data

| | |
|-----------------------------------|---------------------------------------|
| Full product code | 871869959243100 |
| Order product name | MASTER LEDtube 1500mm HO 18.2W 840 T8 |
| EAN/UPC – product | 8718699592431 |
| Order code | 929001923002 |
| SAP numerator – quantity per pack | 1 |
| Numerator – packs per outer box | 10 |
| SAP material | 929001923002 |
| SAP net weight (piece) | 0.450 kg |

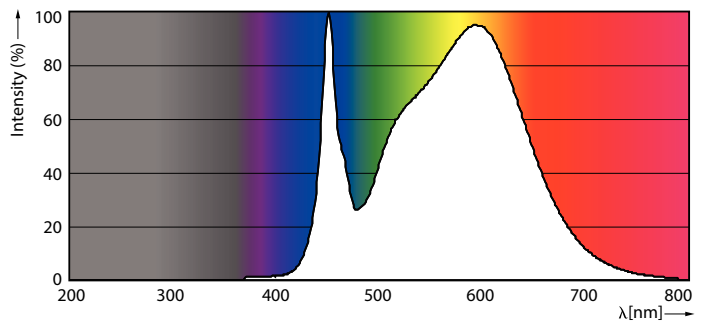
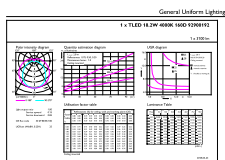
Dimensional drawing



TLED master HE 3100lm 18.2w 5ft 4000k

| Product | D1 | D2 | A1 | A2 | A3 |
|---------------------------------------|---------|-------|-----------|-----------|---------|
| MASTER LEDtube 1500mm HO 18.2W 840 T8 | 25.8 mm | 28 mm | 1498.8 mm | 1505.9 mm | 1513 mm |

Photometric data

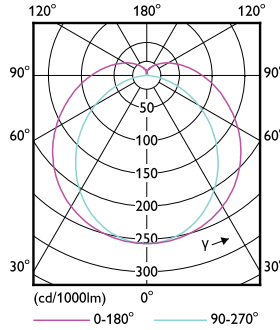
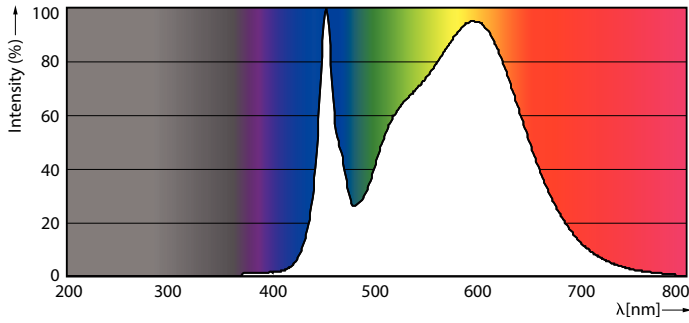


LEDtube MAS HO 18.2W G13 840 16D ND

LEDtube MAS HO G13

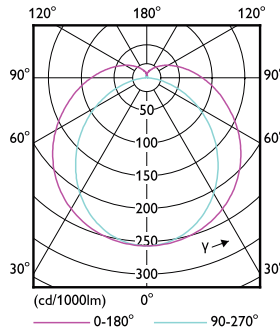
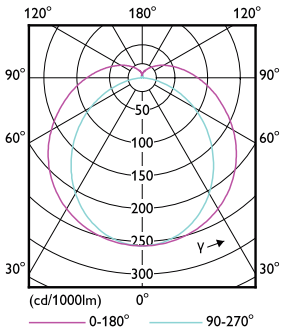
MASTER LEDtube EM/Mains

Photometric data



LEDtube MAS HO 12.5W G13 840 16D ND

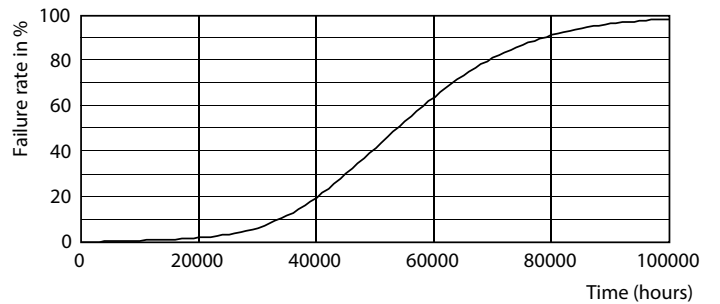
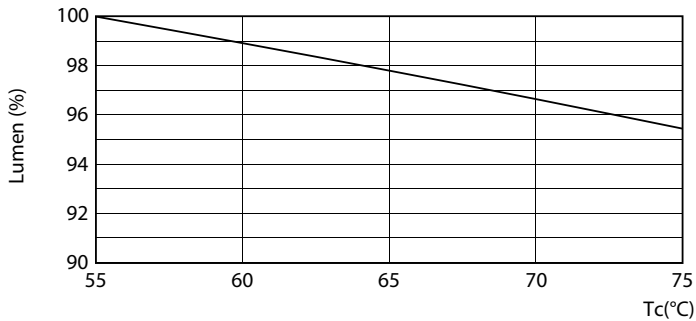
LEDtube MAS HO G13



LEDtube T8 MAS HO G13

LEDtube MAS HO 12.5W G13 830 16D ND

Lifetime

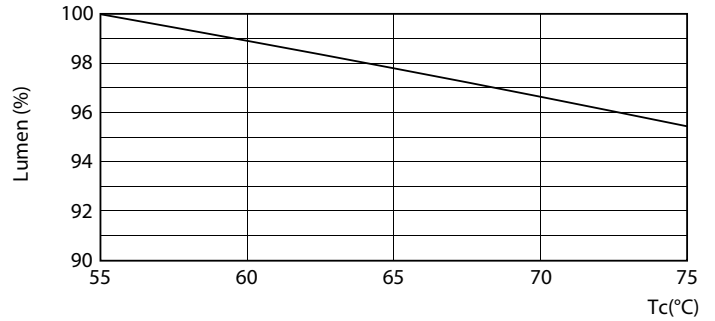
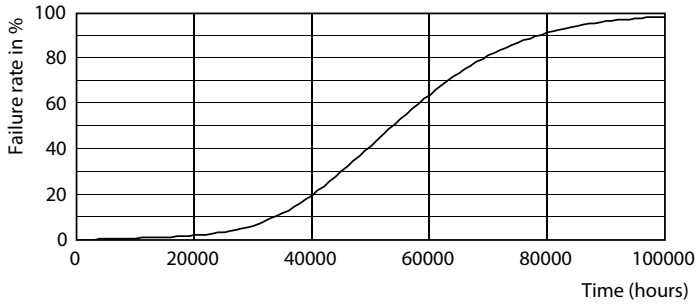


LEDtube T8 MAS HO 18.2W G13

LEDtube MAS HO G13

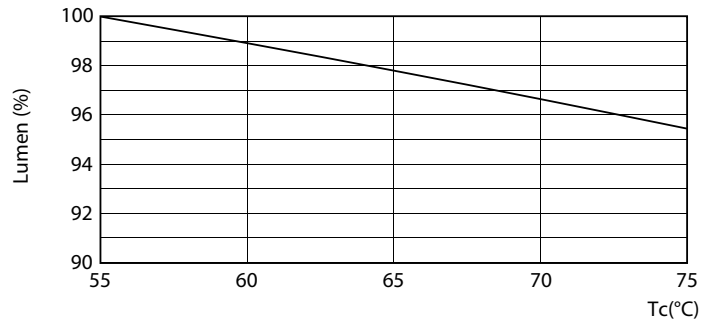
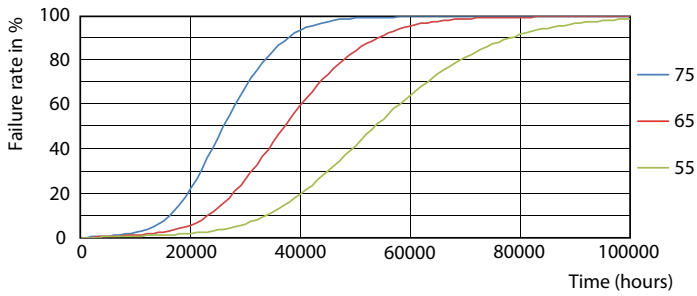
MASTER LEDtube EM/Mains

Lifetime



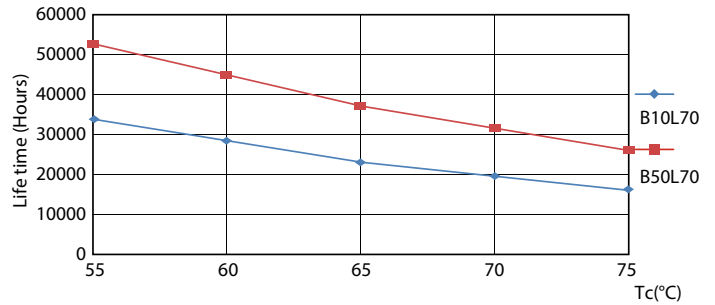
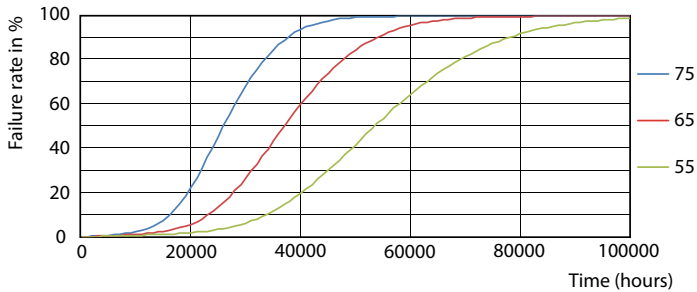
LEDtube T8 MAS HO G13

LEDtube MAS HO 18.2W G13 830 16D ND



LEDtube MAS HO G13

LEDtube MAS HO 18.2W G13

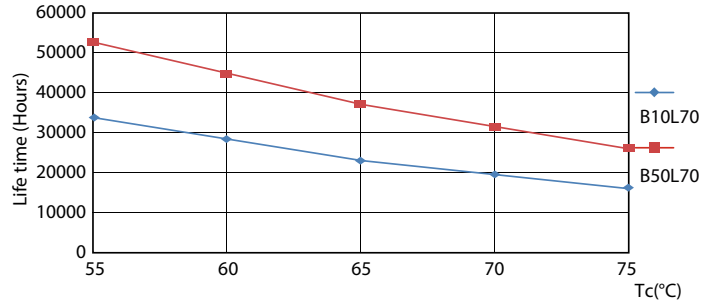
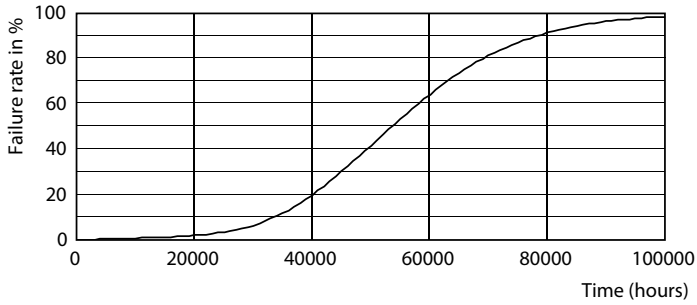


LEDtube MAS HO 12.5W G13 830 16D ND

LEDtube T8 MAS HO G13

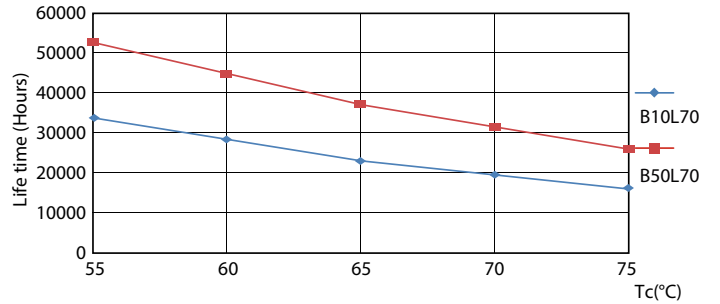
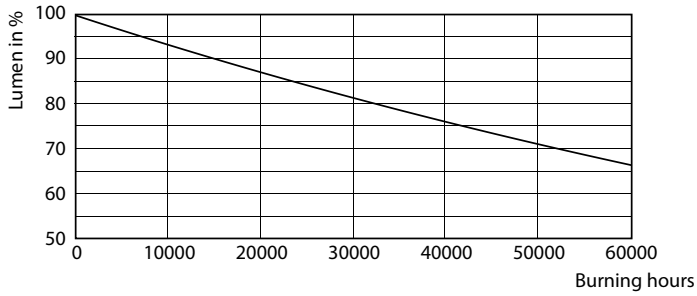
MASTER LEDtube EM/Mains

Lifetime



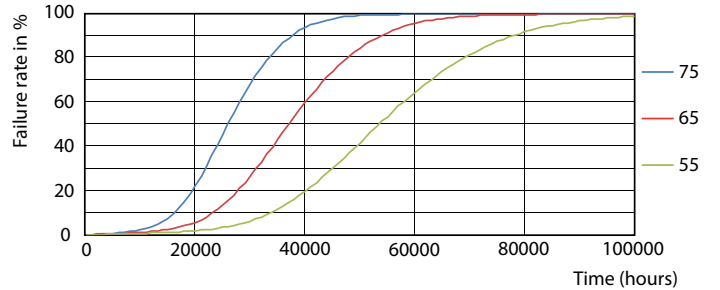
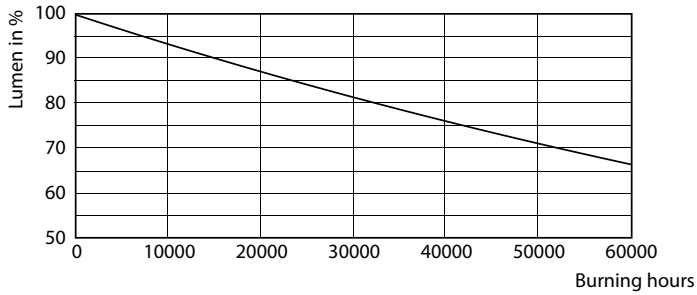
LEDtube MAS HO 12.5W G13 830 16D ND

LEDtube MAS HO 12.5W G13 830 16D ND



LEDtube T8 MAS HO G13

LEDtube MAS HO G13



LEDtube MAS HO G13

LEDtube T8 MAS HO G13

MASTER LEDtube EM/Mains

