



MASTER LEDtube EM/ Mains T8

MAS LEDtube 1200mm HO 12.5W 840 T8

The Philips MASTER LEDtube integrates a LED light source into a traditional fluorescent form factor. Its unique design creates a perfectly uniform visual appearance which cannot be distinguished from traditional fluorescent. This product is the ideal solution for up lighting in general lighting applications.

Warnings and Safety

- -
- -

Product data

General Information	
Lighting Technology	LED
Flux measurement reference	Sphere
Switching Cycle	200,000
Nominal lifetime	75,000 hour(s)
Cap-Base	G13 ROT (Rotating) [Medium Bi-Pin Fluorescent]

Light Technical	
Color Code	840 [CCT of 4000K]
Beam Angle (Nom)	160 degree(s)
Luminous Flux	2,100 lumen
Color Designation	Cool White (CW)
Correlated Color Temperature (Nom)	4000 K
Luminous Efficacy (rated) (Nom)	168 lm/W
Color Consistency	<6
Color rendering index (CRI)	80

LLMF At End Of Nominal Lifetime (Nom)	70 %
Flickering value (PstLM)	1
Stroboscopic effect value (SVM)	0.4

Operating and Electrical	
Line Frequency	50 to 60 Hz
Input Frequency	50 to 60 Hz
Power Consumption	12.5 W
Starting Time (Nom)	0.5 s
Warm-up time to 60% light	0.5 s
Power Factor (Fraction)	0.9
Voltage (Nom)	220-240 V

Temperature	
Ambient temperature range	-20 °C to 45 °C
T-Case Maximum (Nom)	50 °C

MASTER LEDtube EM/Mains T8

Controls and Dimming

Dimmable	No
----------	----

Mechanical and Housing

Bulb Finish	Frosted
Bulb Material	Plastic
Product Length	1,200 mm
Bulb Shape	Tube, double-ended

Approval and Application

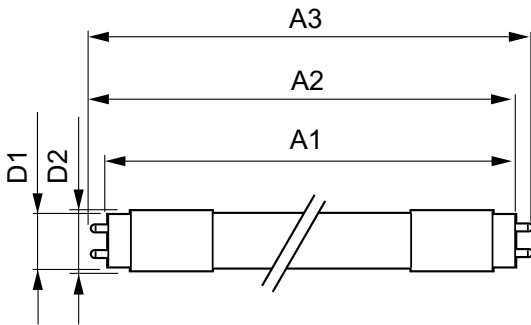
Energy Efficiency Class	C
Energy Saving Product	Yes
Approval Marks	RoHS compliance TUV CE marking KEMA Keur certificate
Energy Consumption kWh/1000 h	13 kWh

EPREL Registration Number	1206967
CE mark	Yes
EU RoHS compliant	Yes

Product Data

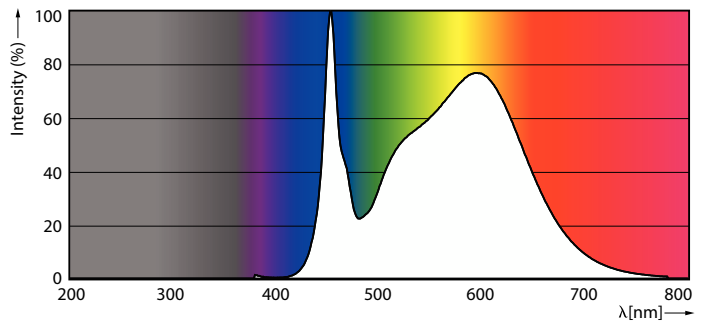
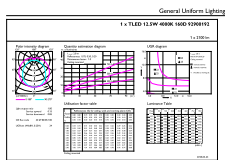
Full product code	871869959237000
Order product name	MAS LEDtube 1200mm HO 12.5W 840 T8
Order code	929001922702
Numerator - Quantity Per Pack	1
Numerator - Packs per outer box	10
Material number (12NC)	929001922702
Full product name	MAS LEDtube 1200mm HO 12.5W 840 T8
EAN/UPC - Case	8718699592387

Dimensional drawing



Product	D1	D2	A1	A2	A3
MAS LEDtube 1200mm HO 12.5W 840 T8	25.8 mm	28 mm	1,198.2 mm	1,205.3 mm	1,212.4 mm

Photometric data

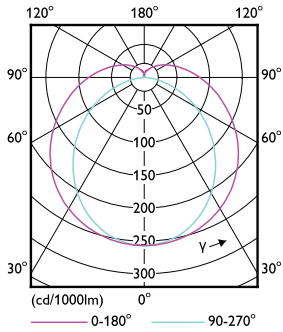


General uniform lighting - MAS LEDtube 1200mm HO 12.5W 840 T8

Spectral Power Distribution Colour - MAS LEDtube 1200mm HO 12.5W 840 T8

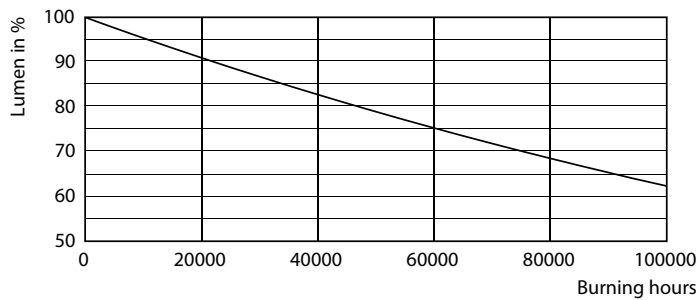
MASTER LEDtube EM/Mains T8

Photometric data

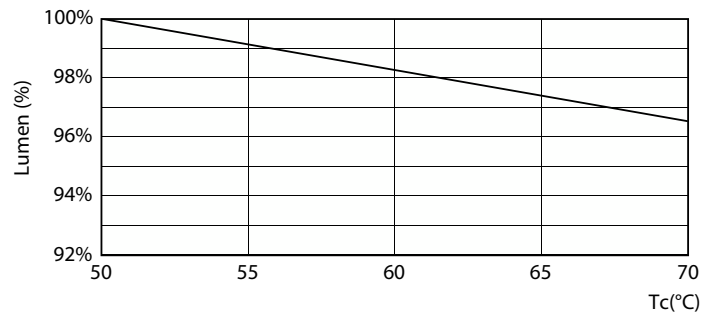


Light Distribution Diagram - MAS LEDtube 1200mm HO 12.5W 840 T8

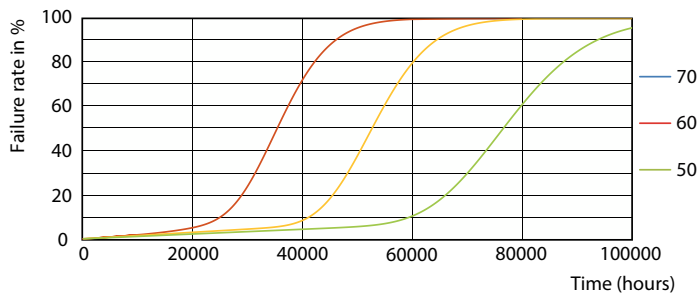
Lifetime



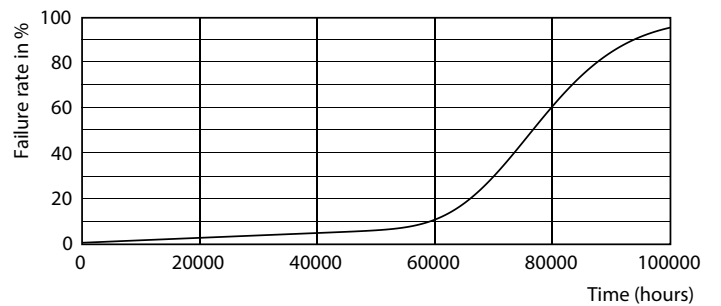
Lumen Maintenance Diagram - MAS LEDtube 1200mm HO 12.5W 840 T8



Lumen Maintenance Diagram - MAS LEDtube 1200mm HO 12.5W 840 T8



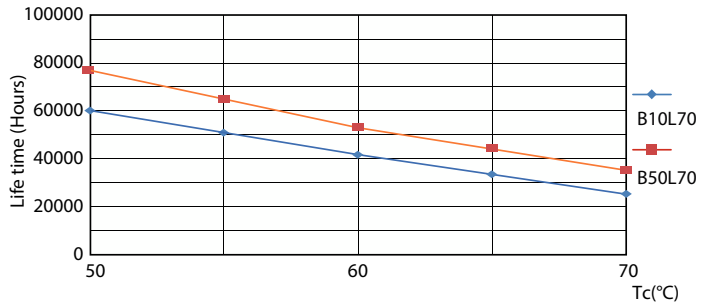
Life Expectancy Diagram - MAS LEDtube 1200mm HO 12.5W 840 T8



Life Expectancy Diagram - MAS LEDtube 1200mm HO 12.5W 840 T8

MASTER LEDtube EM/Mains T8

Lifetime



Life Expectancy Diagram - MAS LEDtube 1200mm HO 12.5W 840 T8

