

# MASTER LEDtube InstantFit HF T5

## Master LEDtube HF 600mm HE 8W 830 T5

The Philips MASTER LEDtube integrates an LED light source into a traditional fluorescent form factor. Its unique design creates a perfectly uniform visual appearance, which cannot be distinguished from traditional fluorescents. These T5 lighting tubes are the right choice for absolute performance and are designed to stand up to everyday conditions. Unparalleled savings, thanks to low energy consumption and an exceptionally long lifetime, make these T5 LED tubes the choice for every demanding applications.

### Product data

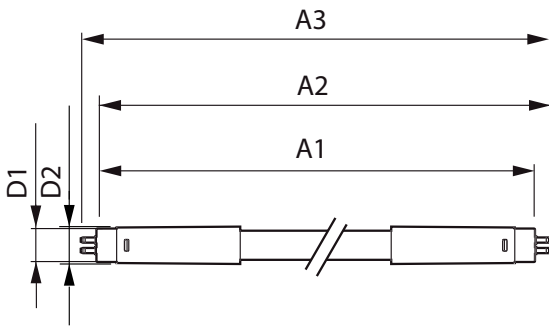
General information		LLMF at end of nominal lifetime (nom.) 70 %	
Cap base	G5 [ G5]		
EU RoHS compliant	Yes		
Nominal lifetime (nom.)	60000 h	Operating and electrical	
Switching cycle	50000	Input frequency	30 K to 100 K Hz
	Sphere	Power (Rated) (Nom)	8 W
Tier	MASTER	Lamp current (max.)	350 mA
		Lamp current (min.)	150 mA
		Starting time (nom.)	0.5 s
		Warm-up time to 60% light (nom.)	0.5 s
		Power factor (nom.)	0.92
		Voltage (Nom)	40-70 V
Light technical		Temperature	
Colour Code	830 [ CCT of 3,000 K]	T-ambient (max.)	45 °C
Technical Beam Angle (Nom)	200 °	T-ambient (min.)	-20 °C
Lamp Luminous Flux 25°C EL (Nom)	1000 lm	T storage (max.)	65 °C
Colour Designation	White (WH)	T storage (min.)	-40 °C
Colour Temperature, horizontal (Nom)	3000 K		
Lamp Luminous Efficacy EM (Nom)	125.00 lm/W		
Colour consistency	<6		
Colour Rendering Index,horiz (Nom)	80		

# MASTER LEDtube InstantFit HF T5

T-Case maximum (nom.)	65 °C
<b>Controls and dimming</b>	
Dimmable	Yes – Check ballast compatibility
<b>Mechanical and housing</b>	
Lamp Finish	Frosted
Bulb material	Glass
Product length	23-5/8 in
Bulb shape	Tube, double-ended
<b>Approval and application</b>	
Energy Efficiency Class	E
Energy-saving product	Yes
Approval marks	RoHS compliance TUV CE marking KEMA Keur certificate

Energy consumption kWh/1,000 hours	8 kWh
	406183
<b>Product data</b>	
Full product code	871869674323200
Order product name	Master LEDtube HF 600mm HE 8W 830 T5
EAN/UPC – product	8718696743232
Order code	929001390702
SAP numerator – quantity per pack	1
Numerator – packs per outer box	10
SAP material	929001390702
Net Weight (Piece)	0.080 kg

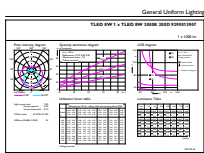
## Dimensional drawing



Master LEDtube HF 600mm HE 8W 830 T5

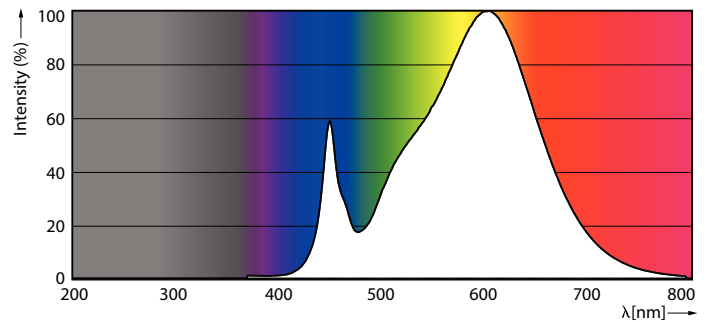
Product	D1	D2	A1	A2	A3
Master LEDtube HF 600mm HE 8W 830 T5	15.5 mm	18.8 mm	549 mm	556.1 mm	563.2 mm

## Photometric data



General Catalog Lighting  
T5LED 600 + T5LED 600 8W 830 1000lm  
Page 17

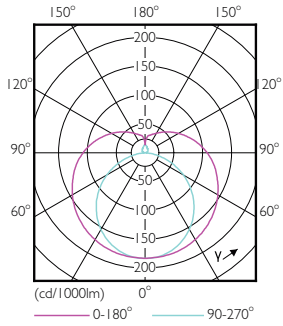
LEDtube 600mm 8W G5 830 1000lm



Spectral Power Distribution Colour

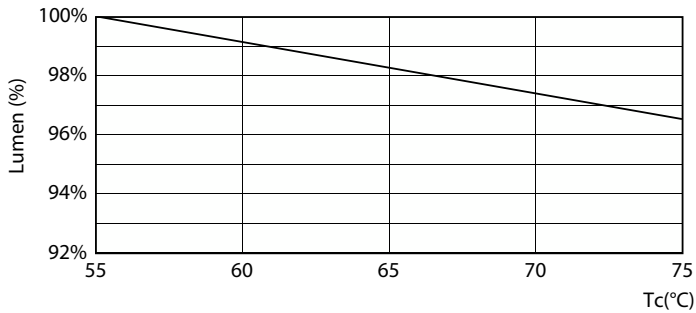
# MASTER LEDtube InstantFit HF T5

## Photometric data

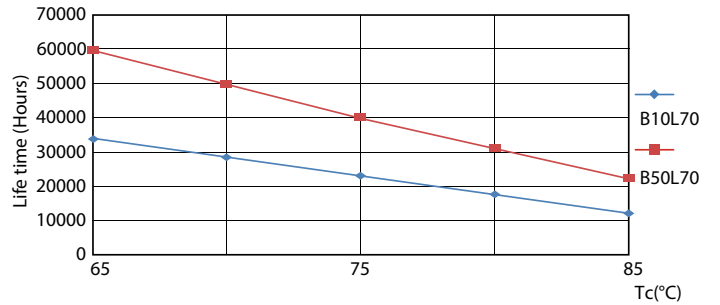


LEDtube 600mm 8W G5 830 1000lm

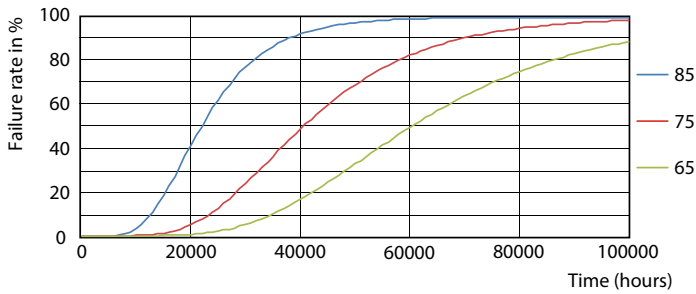
## Lifetime



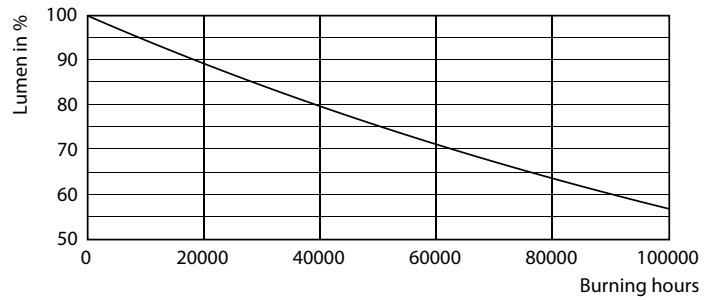
LumenVsTc



LifetimeVsTc



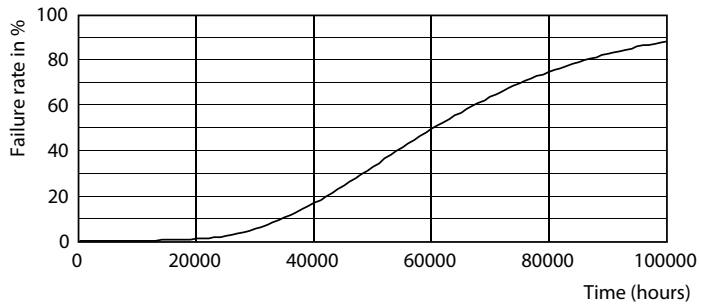
FailureRate



Lumen Maintenance Diagram

# MASTER LEDtube InstantFit HF T5

## Lifetime



### Life Expectancy Diagram

