



MASTER LEDtube EM/ Mains

MASTER LEDtube 1200mm HO 14W830 T8

The Philips MASTER LEDtube integrates a LED light source into a traditional fluorescent form factor. Its unique design creates a perfectly uniform visual appearance which cannot be distinguished from traditional fluorescent. This product is the ideal solution for up lighting in general lighting applications.

Warnings and Safety

• -

Product data

General Information	
Cap base	G13 [Medium Bi-Pin Fluorescent]
EU RoHS compliant	Yes
Nominal lifetime (nom.)	50000 h
Switching cycle	200,000X

Light Technical	
Colour Code	830 [CCT of 3,000 K]
Technical Beam Angle (Nom)	160 °
Lamp Luminous Flux 25°C EL (Nom)	2000 lm
Colour Designation	White (WH)
Colour Temperature, horizontal (Nom)	3000 K
Lamp Luminous Efficacy EM (Nom)	142.00 lm/W
Colour consistency	<6
Colour Rendering Index,horiz (Nom)	83
LLMF at end of nominal lifetime (nom.)	70 %

Operating and Electrical	
Input frequency	50 to 60 Hz
Power (Rated) (Nom)	14 W
Lamp current (max.)	65 mA
Lamp current (min.)	60 mA
Starting time (nom.)	0.5 s
Warm-up time to 60% light (nom.)	0.5 s
Power factor (nom.)	0.9
Voltage (Nom)	220-240 V

Temperature	
T-ambient (max.)	45 °C
T-ambient (min.)	-20 °C
T storage (max.)	65 °C
T storage (min.)	-40 °C
T-Case maximum (nom.)	55 °C

MASTER LEDtube EM/Mains

Controls and Dimming

Dimmable No

Mechanical and Housing

Product length 1200 mm

Bulb shape Tube, double-ended

Approval and Application

Energy-saving product Yes

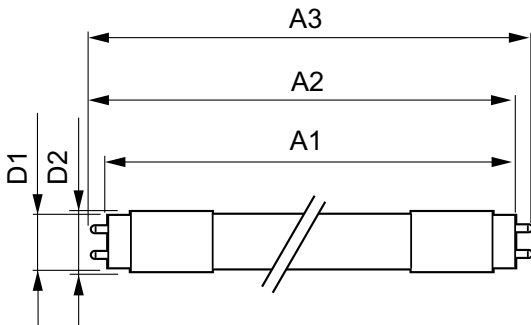
Approval marks CE marking RoHS compliance KEMA Keur certificate

Energy consumption kWh/1,000 hours 14 kWh

Product Data

Full product code	871869668724600
Order product name	MASTER LEDtube 1200mm HO 14W830 T8
EAN/UPC – product	8718696687246
Order code	929001299208
SAP numerator – quantity per pack	1
Numerator – packs per outer box	10
SAP material	929001299208
SAP net weight (piece)	0.215 kg

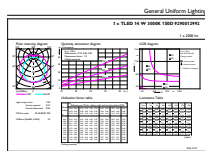
Dimensional drawing



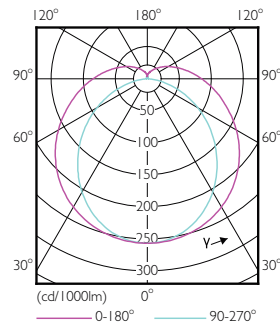
TLED 4ft 14W-36W 2000lm 150D 3000K G13ND

Product	D1	D2	A1	A2	A3
MASTER LEDtube 1200mm HO 14W830 T8	25.8 mm	28 mm	1198.2 mm	1205.3 mm	1212.4 mm

Photometric data



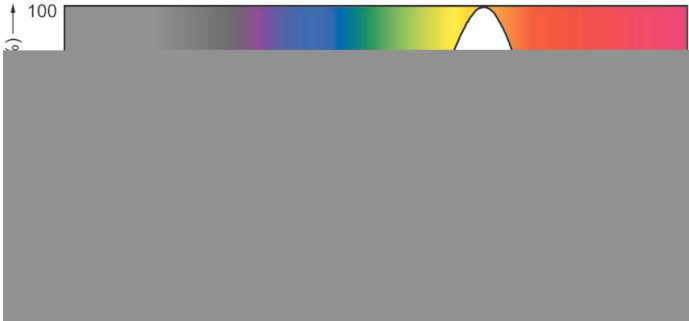
MAS LEDtube HO 14W G13 830 T8



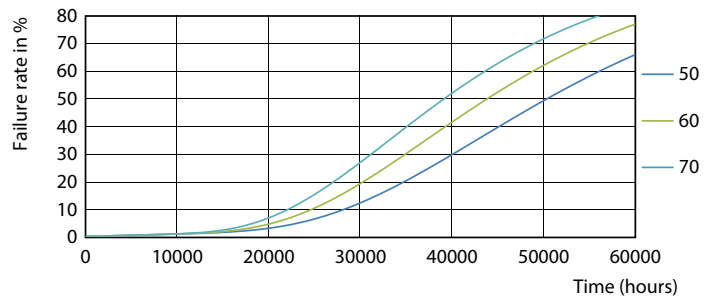
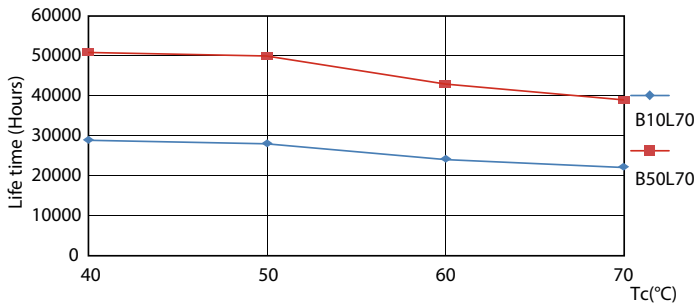
MAS LEDtube HO 14W G13 830-865 T8

MASTER LEDtube EM/Mains

Photometric data

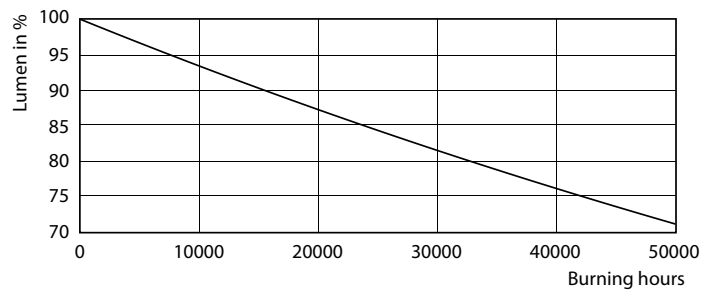
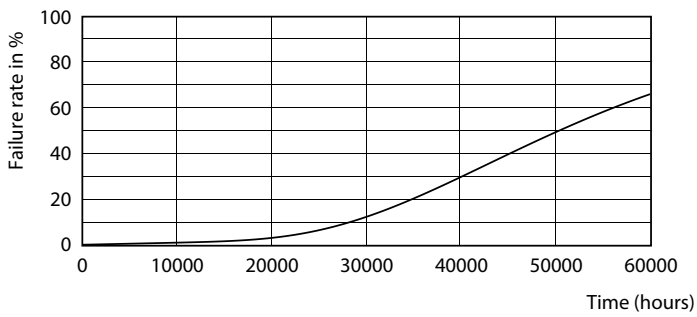


Lifetime



MAS LEDtube HO 14W G13 830-865 T8

MAS LEDtube HO 14W G13 830-865 T8

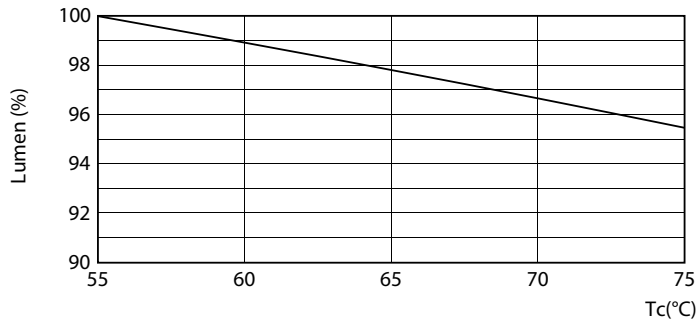


MAS LEDtube HO 14W G13 830-865 T8

MAS LEDtube HO 14W G13 830-865 T8

MASTER LEDtube EM/Mains

Lifetime



MAS LEDtube HO 14W G13 830-865 T8

