



GreenPerform Waterproof G2, an upgraded functional water and dust proof product, providing excellent lighting quality, substantial energy saving and maintenance free saving.

Greenperform Waterproof G2 - WT188C

Greenperform Waterproof G2 luminaire and its components are designed for both indoor and semi-outdoor application (anti-UV PC material housing and diffuser, stainless steel installation accessory). We design for friendly optical, energy saving, reliable quality, and easy wiring. Beyond that, GreenParking wireless motion detective system is ready to provide the maximum energy saving and new lighting experience to you.

Greenperform Waterproof G2 - WT188C

Benefits

- Slim and elegant look and feel
- Low glare, friendly to eyes
- Reliable quality, low failure rate, long lifetime, energy saving and free of maintenance
- Wide working temperature, can be applied in various industrial environments
- Easy wiring, fulfill with customer wiring habits and saving labor cost

Features

- IP65 IK08, Anti UV Polycarbonate housing, dual extrusion housing, opal diffuser
- 50K hours @ L70B50, wide range working temperature from -30°C to +45°C
- Surface & suspension installation to ceiling and wall
- stainless mounting clips and hooks, all in 1 package with luminaire
- 3 wiring options same with conventional product

Application

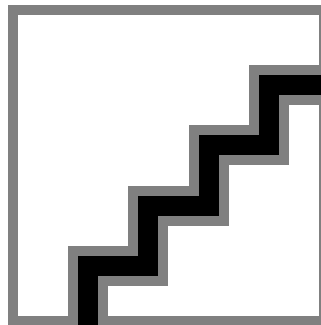
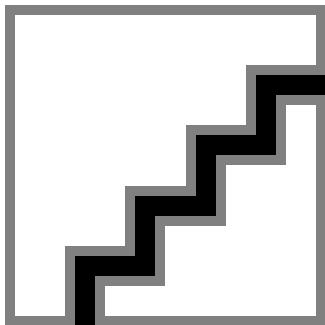
- Industry general application
- Food and beverage workshop and assemble line
- Canopy
- Parking garages
- Car washers

Versions



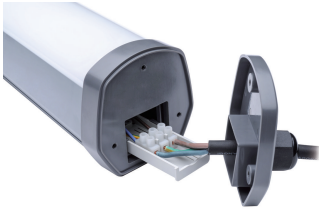
WT188C TB

Dimensional drawing



Greenperform Waterproof G2 - WT188C

Product details



WT188C Terminal Block Pushin
Detail Photo

